

Tullaroop Catchment

Citizen Science Program



If you're passionate about your local environment, then we need your help!

We're calling on the local community to help keep a watchful eye on the health of waterways in the Tullaroop catchment.

The Tullaroop catchment is part of the Loddon River Basin featuring highly productive agricultural land, significant wetlands, terrestrial habitats, and sites of significance to Traditional Owners, the Djaara people.

Historical land management practices have resulted in extensive loss of riverside vegetation and instream habitat, which impacts water quality and overall river health. The North Central Catchment Management Authority's **Tullaroop Catchment Restoration Project** will work with the community to improve this through fencing, off-stream stock watering, revegetation, weed control and installation of woody habitat.

This will improve waterway health and in-stream habitat for river blackfish and platypus populations, and improve water quality in the Tullaroop Reservoir, which supplies drinking water to surrounding towns and irrigation water for downstream users.

We can't do it alone

Community involvement is vital to the success of the project. Through the project, we are supporting a citizen science program to help build people's knowledge of waterway health and contribute vital data to the project team.

Training will be provided so participants can collect data that will be used in an annual River Health SnapShot Report to demonstrate how restoration works are transforming the catchment.

Being a volunteer citizen scientist is a great opportunity to connect with your community and the environment



Gathering important data on Birch's Creek

No experience necessary - it's easier than you think!

Community members can become citizen scientists by helping monitor water quality and waterbugs at selected sites.

Water Quality

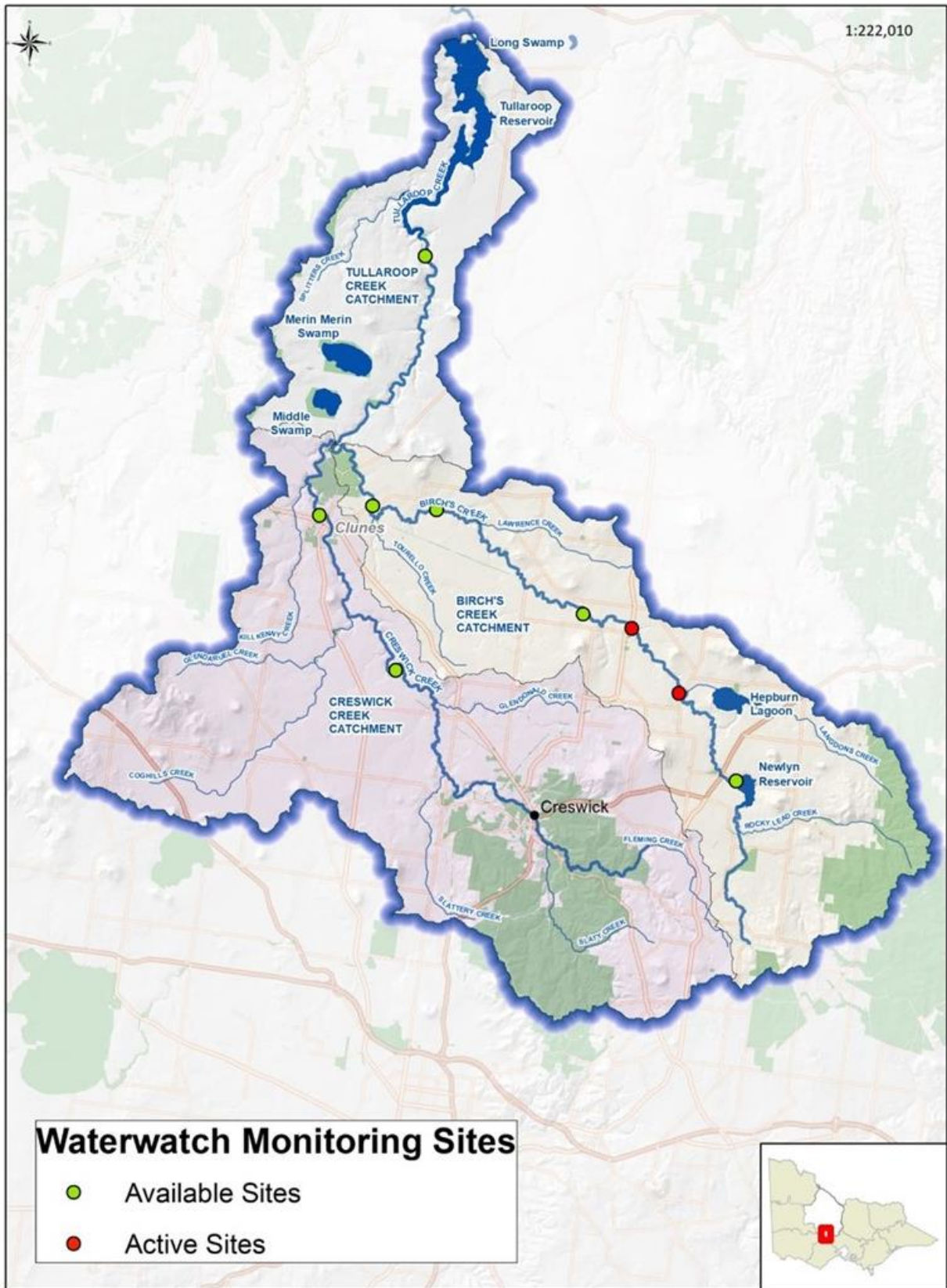
- ◆ Involves monthly testing of temperature, phosphorus, pH, salinity, and turbidity
- ◆ Helps us understand how conditions change over time
- ◆ Can demonstrate improvements as a result of environmental restoration works
- ◆ Indicates if water quality is likely to affect the health of fish and other aquatic fauna

Waterbugs

- ◆ Are monitored annually in spring
- ◆ Are excellent indicators of river health
- ◆ Can help measure the success of on-ground works

Want to find out more or get involved?

If you live in the project area (map over page) and would like to become a volunteer citizen scientist, please register your interest with our Citizen Science project officer britt.gregory@nccma.vic.gov.au or (03) 5440 1843



Above: Tullaroop Catchment Restoration Project Area

If you live in this area or nearby and would like to become involved, please register your interest.

For more information
 Telephone 03 5448 7124 or visit www.nccma.vic.gov.au
 f @ t