



Gunbower Forest wetland watering

In 2020, North Central Catchment Management Authority (CMA) will be managing important water for the environment deliveries to high-priority wetlands in Gunbower Forest.

Why are the wetlands being watered?

Reedy Lagoon and Black Swamp are two permanent wetlands in Gunbower Forest, holding water in most years. Both wetlands last received water in mid-2019, and have been allowed to draw down to very small pools with the aim of reducing carp numbers. The aim of delivering water for the environment to these wetlands is to support the growth and recruitment of wetland plants and provide feeding, nesting and refuge habitat for waterbirds, turtles, frogs and native fish throughout spring and into summer and autumn.



Reedy Lagoon in September 2019.

The outlook for spring 2020 is for above-average rainfall which may result in peaks in the Murray River and some natural inflows to Gunbower Forest. These events are difficult to predict, but if conditions are suitable, water for the environment may be used to supplement some of these flows if a greater ecological benefit can be achieved. For example, top-ups to wetlands to support waterbird breeding or connectivity flows between the river, floodplain and Gunbower Creek.

Which wetlands are being watered?

Reedy Lagoon and Black Swamp will be filled in spring 2020, and a through-flow will be delivered via Yarran Creek if the conditions are suitable, starting in late August through spring. These wetlands will receive an additional top-up in late spring or early summer if required, to maintain habitat for wetland-dependent plants and animals.



Reedy Lagoon during the 2019 watering.

Where to visit?

Reedy Lagoon is always a special place to visit. It's a great spot for waterbird watching, photography and has excellent aquatic vegetation.

Please ensure you are adhering to the relevant COVID-19 travel restrictions and physical distancing requirements.

How will the watering impact forest users?

The delivery of water for the environment to Reedy Lagoon and Black Swamp will not impact access to Gunbower Forest.

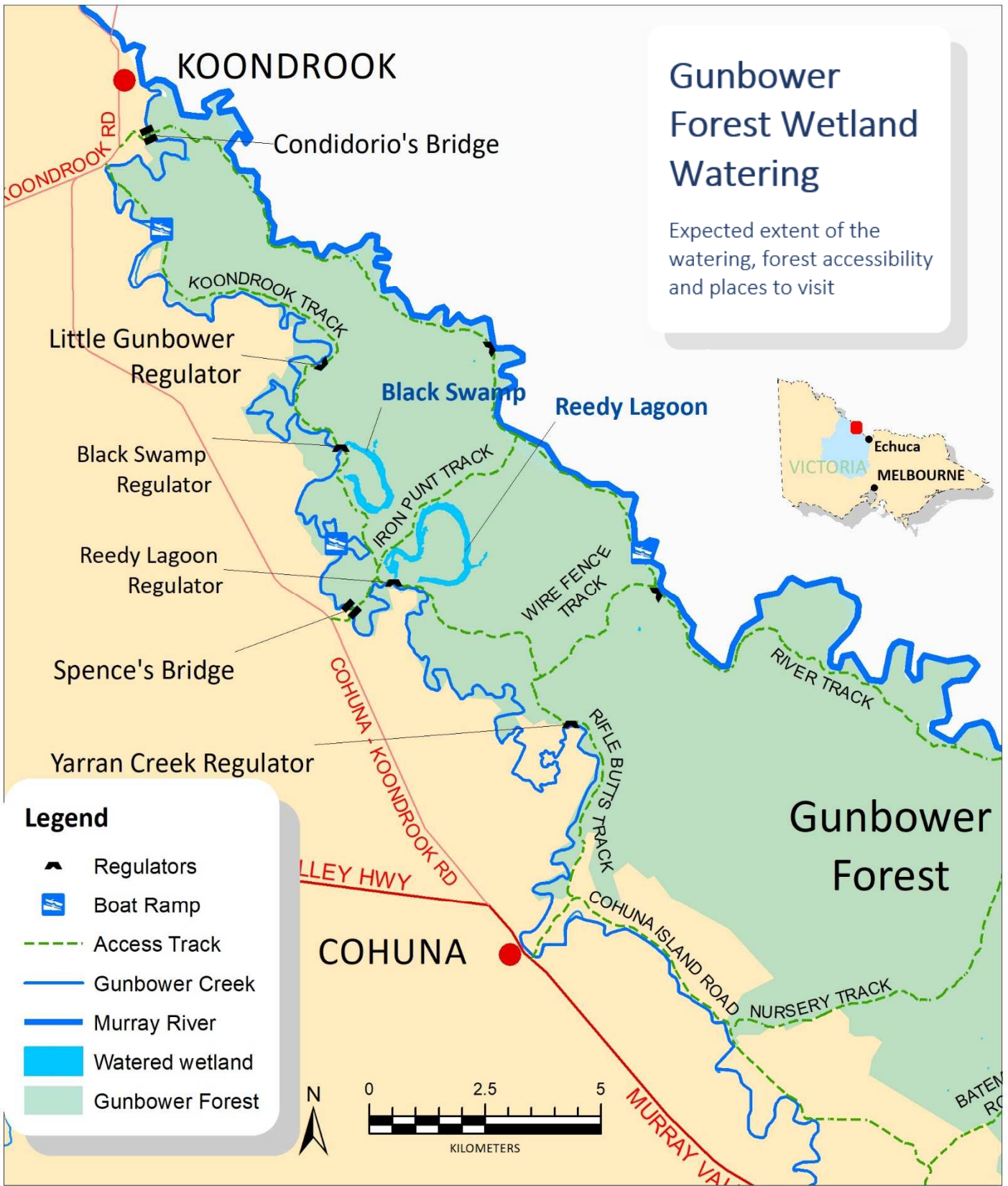
For further information about environmental watering contact the North Central CMA on (03) 5448 7124 or visit www.nccma.vic.gov.au.

Information on forest access, domestic firewood collection and camping:

- DELWP on 136 186 or visit www.facebook.com/DELWPLoddonMallee
- Parks Victoria on 131 963 or visit www.parksvic.gov.au

Gunbower Forest Wetland Watering

Expected extent of the watering, forest accessibility and places to visit



The Flooding for Life project is delivered by the North Central Catchment Management Authority (CMA) in partnership with Goulburn–Murray Water, Murray-Darling Basin Authority, Department of Environment, Land, Water and Planning (DELWP) and Parks Victoria. It is part of The Living Murray program, a joint initiative of the New South Wales, Victorian, South Australian, Australian Capital Territory and the Commonwealth governments, coordinated by the Murray–Darling Basin Authority (MDBA). Environmental water releases at Gunbower Forest are made in line with the Victorian Environmental Water Holder’s *Seasonal Watering Plan* for 2020-21, which aims to improve river and wetland health across the State.