

# North Central Chat

Keeping you up to date with all the Landcare and Waterwatch news



March 2022

## A message from the Regional Landcare Coordinator

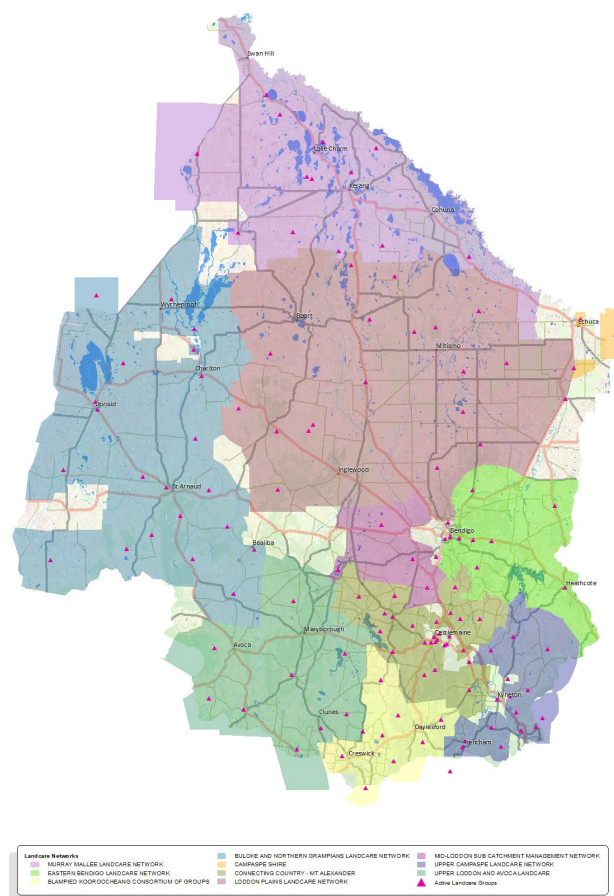
Hi everyone,

I hope last month's Rabbit Buster feature edition prompted some thought and action amongst your local community. Rabbit management not only benefits our farms and landscape, but is integral to the overall function of our ecosystems and the sensitive species within them. Persistence and patience with a control program that focuses on a site's threshold is often rewarded over time with reduced soil disturbance, less weed invasion and flourishes of native flora. There is an upcoming [Rabbit Control Research and Development webinar](#) on March 21, if you are interested in the latest science and Calicivirus K5 update.

As summer draws to a close and autumn, just around the corner, your local landscape may need a helping hand or two. Autumnal revegetation has become a favourable planting season for many Landcare groups in the catchment. Several years ago, Kara Kara CMN undertook an audit of their revegetation successes, and found changing their planting to autumn from spring proved far more beneficial for plant success. It's so important to take stock of what's working in your local patch to ensure your valuable volunteer time and revegetation practices are as effective as possible.

Looking ahead, there are plenty of events, field days, festivals and workshops being hosted by local Landcare Networks to bring people back together. If you aren't yet connected with Landcare support staff in your area and the activities they are arranging, you can get in touch with Darren and me to find your nearest facilitator. The map provides a visual representation of the coverage of support across the catchment. There is no shortage of land management advice or direct volunteering opportunities to suit any interest.

This month, I will be doing the rounds to get a feel for how the 2021 Victorian Landcare Grant recipients are getting on with their projects and we will highlight their progress in the coming issues of the Chat.



[Landcare Networks and active Landcare groups of the North Central CMA region](#)

Hoping to see some familiar faces drop by at the North Central CMA Bendigo Sustainability Festival stall on March 27.

Enjoy the read,

Tess Grieves

Regional Landcare Coordinator  
North Central CMA

Phone: 03 5448 7124

Email: [tess.grieves@nccma.vic.gov.au](mailto:tess.grieves@nccma.vic.gov.au)

## Connecting rivers, landscapes, people

The North Central Catchment Management Authority (CMA) acknowledges Traditional Owners and Aboriginal and Torres Strait Islander peoples within the region, their rich cultures, spiritual connection to Country.

[www.nccma.vic.gov.au](http://www.nccma.vic.gov.au)



**News...**

**Breakfast with the Birds**



**The North Central CMA hosted another successful Breakfast with the Birds event on Sunday February 13.**

55 keen early birds, came from far and wide, braving the 6am start to enjoy sunrise at Lake Murphy. Ecologist Damien Cook and Darren Quinn (Birdlife Australia) guided the group around the wetlands pointing out birds, their habitat needs, the environmental values of the lake and watering regimes.

This annual event kicks off the year in such a special way, and 2022 was no exception. Guests were Welcomed to Country by Uncle Ron Galway, before hearing from the CMA’s ‘Bringing Back the Bittern’ project team who undertake awareness events and onground works to support Australasian Bittern habitat.

It was reported that the three brolgas who have been residing at Lake Murphy were seen by the group, which was a bonus.

This event is funded through the Australian Government’s National Landcare Program.



A coffee lakeside is always a special treat at sunrise.

**Boost for Platypus conservation and Icon Species**

**The ongoing protection of the platypus – one of Australia’s most loved, yet mysterious creatures – has received a boost thanks to Andrews Labor Government funding for a new Australian Platypus Conservation Centre.**

Minister for Energy, Environment and Climate Change Lily D’Ambrosio recently announced \$5 million to build the state-of-the-art centre at Zoos Victoria’s Healesville Sanctuary.

The centre will be used by world-leading platypus researchers to conduct biological and behavioural research to help Australia-wide conservation efforts. It will also provide enhanced capacity to treat and care for wild platypus affected by extreme weather emergencies.

The funding follows a \$300,000 Labor Government investment in 2021 to support key platypus habitat site restoration works and long-term planning to ensure the unique monotreme has a healthy future. One of these projects, at Hamilton’s Grange Burn waterway, will feature a new online livestream - Platycam.



The government is also injecting more than \$870,000 for 14 projects across the state to support the ongoing protection of icon species including the brush-tailed rock wallaby, eastern barred bandicoot, southern bent-wing bat, burranan dolphin and eltham copper butterfly.

The projects include a program to monitor the bogong moth across the Victorian Alps to help better target conservation efforts of the Endangered insect. The migratory moth is a key food source for the critically endangered mountain pygmy possum and other wildlife.

The Icon Species Program has provided more than \$2.6 million to support 19 of Victoria’s icon species over the past five years.

## Natural Environment Adaptation Action Plan released

**The Victorian Government has prepared Adaptation Action Plans (AAPs) across 7 systems to ensure Victoria's climate resilience, now and in the future.**

The Plans are guiding government action and helping institutions, businesses and individuals take informed action to respond to the risks and opportunities of our changing climate. The Plans reflect lessons learned from adaptation efforts to date and have been informed by organisations and experts as well as the public through consultation in mid-2021. Each Plan sets out:

- the challenges of climate change for each system
- the extensive work already underway
- the key priorities for the next 5 years.

The [Adaptation Action Plans](#) cover seven essential systems; Built environment, Education and Training, Health and Human Services, Natural Environment, Primary production, Transport, and Water Cycle.

The **Natural Environment Adaptation Plan** plan states that the next five years (2022–2026) will be focused on building the foundations of the practices, systems, and knowledge that will enable effective adaptation to climate impacts on Victoria's natural environments. The Plan will embed climate change adaptation into natural environment management by guiding adaptation planning in regional and place-based plans that manage specific areas and ecosystems, species and natural environment values.

The **Water Cycle Adaptation Plan** is also a valuable read. The Water Cycle system is central to many opportunities to address climate change – for example, through converting wastewater to energy to support a circular economy, or through recycling, water to augment the existing water supply. Nature-based solutions can also offer multiple benefits – for example, planting vegetation along waterways can reduce flood impacts, improve water quality and help shade the surrounding environment.

You can read these Plans in detail via: [Adaptation Action Plans \(climatechange.vic.gov.au\)](https://climatechange.vic.gov.au)

## Draft Victorian Koala Management Strategy - released for public comment

**The Department of Environment, Land, Water and Planning (DELWP) has released its draft Victorian Koala Management Strategy for public comment.**

The new Victorian Koala Management Strategy, when finalised, will replace the 2004 Strategy.

### Purpose of Strategy

The new Victorian Koala Management Strategy will be a state-wide strategy to inform long-term approaches to koala management with the objective of ensuring Victoria's koala populations and habitat are secure, healthy and sustainable. The new Strategy will outline the vision, goals, issues and actions for the conservation and management of Victoria's koalas into the future.

### Koalas in Victoria

Estimates from the first state-wide koala abundance model, which was developed by scientists from the Arthur Rylah Institute for Environmental Research, are also reflected in the draft strategy. The model estimates a state-wide koala population of 460,000, with an estimated 413,000 koalas in native forests and woodlands and a further 47,000 koalas in eucalypt plantations. Koalas have recently been listed as Endangered in the Queensland, the ACT and NSW, but are not threatened in Victoria.

DELWP is seeking feedback from the Victorian community on the draft Strategy, and wants to hear about the issues relating to koalas that are most important to you and why, as well as how you think these issues could be addressed. Your feedback and ideas will help shape the new Strategy. Public consultation closes 3 April 2022.



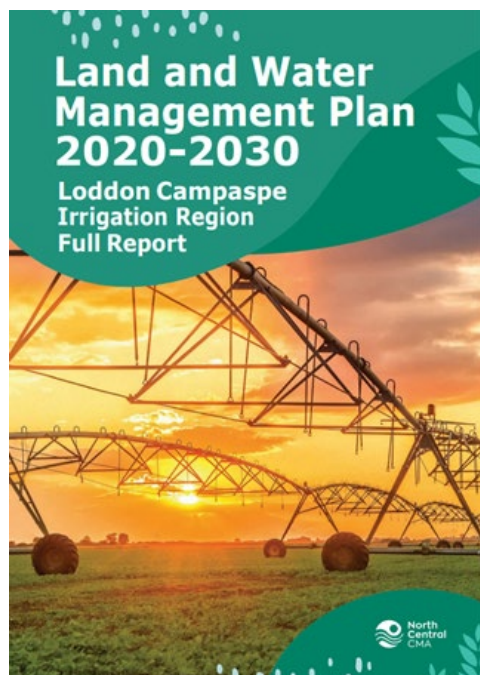
### How to participate

To have your say go to [The new Victorian Koala Management Strategy | Engage Victoria](#)



## Loddon Campaspe Irrigation Region Land and Water Management Plan 2020-2030.

North Central Catchment Management Authority (North Central CMA) would like to invite you to view the Loddon Campaspe Irrigation Region Land and Water Management Plan 2020-2030.



Through this Plan with the community, we can work together towards the Region's long-term objective of; "Using water for healthy, productive, sustainable irrigated food and fibre."

North Central CMA are pleased to announce the Plan is now available for viewing via <http://www.nccma.vic.gov.au/resources/publications/land-and-water-management-plan-2020-2030>

For those who are interested in our current and proposed programs go to Chapter 5, page 39 in the Plan.

A summary document of the Plan has also been developed.

<http://www.nccma.vic.gov.au/resources/publications/land-and-water-management-plan-2020-2030-summary-document>

North Central CMA would like to thank all those who contributed to the Plan. For further information please contact North Central CMA on 03 5448 7124 or email [info@nccma.vic.gov.au](mailto:info@nccma.vic.gov.au).

## Planting Trees for The Queen's Jubilee Program



**Planting Trees for The Queen's Jubilee Program will provide up to \$15.1 million of grant funding in 2022 to eligible groups and organisations for community-based tree planting events.**

The program complements other initiatives taking place across the Commonwealth to mark The Queen's Jubilee, such as a tree-planting initiative in the United Kingdom which is inviting people to "Plant a Tree for the Jubilee".

Under the program, each federal electorate can receive up to \$100,000 in grant funding for up to 10 projects nominated by the local Federal Member of Parliament (MP), in consultation with their local community. Grants range from \$2,500 to \$20,000 per project. Projects are to align with the objective, expected outcomes and eligibility requirements of the program. Additional cash and/or in-kind contributions towards the project costs are encouraged but not required.

Eligible activities are defined in the program's grant guidelines which are the basis for assessing eligibility. As a guide, projects that may be suitable should include:

- formal commemorative event/s in 2022 to mark the Jubilee commemorations
- activities to plant regionally-appropriate tree species with a potential height of at least two metres when mature
- installation of commemorative signage or plaques.

Please refer to the program's guidelines for full details of eligible activities. An invitation to apply does not guarantee a project will be funded.



### New Citizen Science Program in the Tullaroop Catchment

**We're better together so if you're passionate about your local environment we need your help!**

We're calling on the local community to help keep a watchful eye on the health of waterways in the Tullaroop catchment.

The Tullaroop catchment is part of the Loddon River Basin featuring highly productive agricultural land, significant wetlands, terrestrial habitats, and sites of significance to Traditional Owners, the Djaara people.

Historical land management practices have resulted in extensive loss of riverside vegetation and instream habitat, which impacts water quality and overall river health. The North Central Catchment Management Authority's **Tullaroop Catchment Restoration Project** will work with the community to improve this through fencing, off-stream stock watering, revegetation, weed control and installation of woody habitat.

This will improve waterway health and in-stream habitat for river blackfish and platypus populations, and improve water quality in the Tullaroop Reservoir, which supplies drinking water to surrounding towns and irrigation water for downstream users.

### We can't do it alone

Community involvement is vital to the success of the project. Through the project, we are supporting a citizen science program to help build people's knowledge of waterway health and contribute vital data to the project team.

Training will be provided so participants can collect data that will be used in an annual River Health SnapShot Report to demonstrate how restoration works are transforming the catchment.

*Being a volunteer citizen scientist is a great opportunity to connect with your community and the environment*



Gathering important data from Birch's Creek

### No experience necessary - it's easier than you think!

Community members can become citizen scientists by helping monitor water quality and waterbugs at selected sites.



### Water Quality

- ◆ Involves monthly testing of temperature, phosphorus, pH, salinity, and turbidity.
- ◆ Helps us understand how conditions change over time.
- ◆ Can demonstrate improvements as a result of environmental restoration works.
- ◆ Indicates if water quality is likely to affect the health of fish and other aquatic fauna.



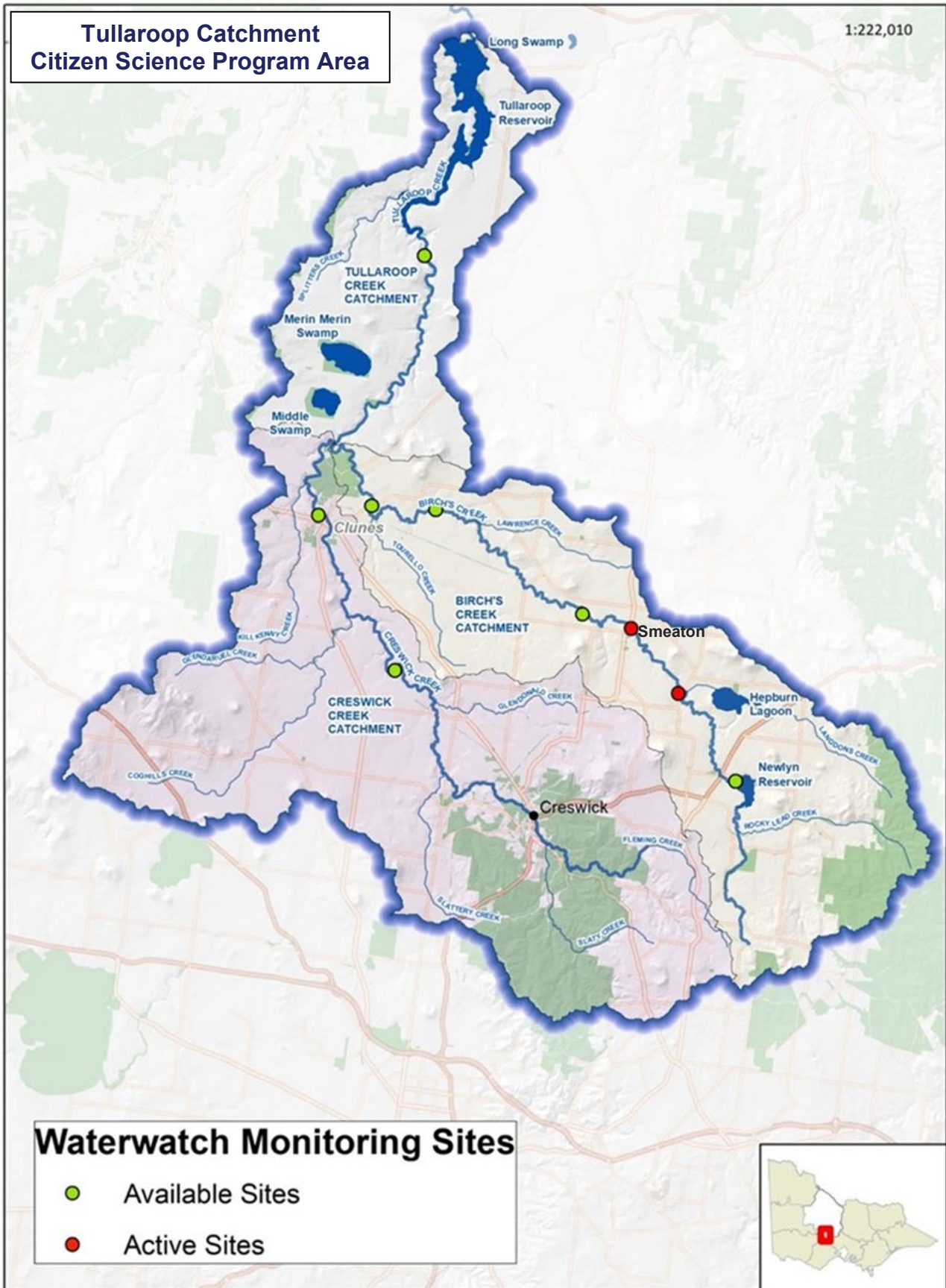
### Waterbugs

- ◆ Are monitored annually in spring.
- ◆ Are excellent indicators of river health.
- ◆ Can help measure the success of onground works.

### Want to find out more or get involved?

If you live in the project area (map over page) and would like to become a volunteer citizen scientist, please register your interest with our Citizen Science Project Officer [britt.gregory@nccma.vic.gov.au](mailto:britt.gregory@nccma.vic.gov.au) or (03) 54401843







**A new year, new possibilities . . . .**

**A bumper crop of River Detectives schools are ready and raring to go!**



We are so proud of this program that started right here in our region and is now highly sought after across five areas of Victoria.

Thirty-seven schools from a variety of locations and settings have signed-up to enjoy the River Detective journey this year in our region. Bringing the statewide total to over eighty schools, 2022 will be a very rewarding year of educating thousands of staff, students (and their families) about waterway and catchment health.

In the north central region, we will be supporting primary and secondary schools (small and large), sustainability teams, home-schooling providers, and innovative River Detectives' lunchtime clubs!

Two-thirds of the schools in our region are strategically aligned with four priority North Central CMA projects providing valuable opportunities to collaborate and share learnings with not only our staff but with other schools within catchments and along the length of waterways from one end to the other.

We are busy getting water quality kits together for schools and planning introductory training workshops for teachers, to be held in March. The 2022 event calendar is jam-packed with exciting learning opportunities that we dearly hope we can implement without any COVID-19 disruptions!

Take a look at the list and map of River Detectives schools. They are all keen to value add to their learning by linking with their community for some positive two-way partnerships. If this sounds like something your community / group would also like to pursue we'd love to hear from you.

Nicole Howie  
 River Detectives Project Officer  
 North Central CMA  
 Phone: 03 5440 1839  
 Email: [nicole.howie@nccma.vic.gov.au](mailto:nicole.howie@nccma.vic.gov.au)

<b>Caring For the Campaspe Project</b>
Woodend Primary School - Carlsruhe Campus
Kyneton Primary School
Sacred Heart College Kyneton
Langley Primary School
Redesdale Mia Mia Primary School
Eppalock Primary School
Goornong Primary School
Elmore Primary School
Rochester Primary School
St Joseph's College Echuca

<b>RiverScan Project</b>
Gunbower Primary School
Boort District P-12 College
Lake Charm Primary School
Koondrook Primary School
Leitchville Primary School
Lake Boga Primary School
Kerang Christian College
St Joseph's Primary School Kerang

<b>Bendigo Creek Citizen Science Project</b>
Kangaroo Flat Primary School
Golden Square Primary School
Camp Hill Primary School
Weeroona College
Epsom Primary School
Huntly Primary School

<b>A Healthy Coliban Catchment Project</b>
Malmsbury Primary School

General North Central CMA schools
Daylesford Dharma School
Bullarto Primary School
Braemar College, Woodend
Merry Gatherings Kitchen Garden, Newbridge
Castlemaine Steiner School
Bridgewater Primary School
Lockwood South Primary School
Marong Primary School
Marist College Bendigo
Victory Christian College, Bendigo
St Francis of the Fields PS, Strathfieldsaye
Donald High School

### Water Storages Update

Region	Water Storage	% full at 23 Jan	% full at 22 Feb
Murray Storages	Dartmouth Dam	91.77	↑92.93
	Hume Dam	99.00	↓95
	Third Lake	14.76	↓6.3
	Reedy/Middle Lk	98.39	97.16
	Kangaroo Lake	96.75	↓93.12
	Kow Swamp	90.67	↓86.94
	Lake Boga	77.97	↑85.18
	Lake Charm	91.61	↑93.37
Loddon Storages	Cairn Curran Res	63.54	↑63.64
	Tullaroop Res	73.91	↓71.27
	Laanecoorie Res	50.38	↓38.38
Bullarook Storages	Newlyn Res	97.79	↓85.44
	Hepburns Lagoon	89.61	↓77.10
Goulburn Storages	Lake Eildon	86.02	↓83.76
	Waranga Basin	75.07	↓61.12
Campaspe	Lake Eppalock	54.03	↓51.79
Coliban Water Storages	Upper Coliban Res	97.70	↓92.40
	Lauriston Res	93.60	↓92.90
	Malmsbury Res	61.80	↓47.50

### North Central River Detective schools



● River Detective Schools

[www.g-mwater.com.au/water-resources/catchments/storage-levels](http://www.g-mwater.com.au/water-resources/catchments/storage-levels)  
[www.coliban.com.au/about-us/our-reservoirs](http://www.coliban.com.au/about-us/our-reservoirs)

### Upcoming Events and Special Days

March	
<u>Business Clean Up Day</u>	1 Mar
<u>ABARES Outlook 2022 Conference</u>	1-4 Mar
<u>World Wildlife Day</u>	3 Mar



<u>Schools Clean Up Day</u>	4 Mar
<u>Parks Week</u>	5-13 Mar
<u>Clean Up Australia Day</u>	6 Mar
<u>International Day of Forests</u>	21 Mar
<u>Sustainable Seafood Week</u>	21-27 Mar
<u>World Water Day</u>	22 Mar
<u>World Meteorological Day</u>	23 Mar
<u>National Eucalypt Day</u>	23 Mar
<u>National Ride2School Day</u>	25 Mar
<u>Earth Hour</u>	26 Mar
<b>April</b>	
<u>World Heritage Day</u>	18 Apr
<u>Earth Day</u>	22 Apr
<u>World Penguin Day</u>	25 Apr
<b>May</b>	
<u>International Composting Awareness Week</u>	1-7 May
<u>World Migratory Bird Day</u>	14 May
<u>National Volunteer Week</u>	TBC
<u>World Bee Day</u>	20 May
<u>International Day for Biological Diversity</u>	22 May
<u>World Turtle Day</u>	23 May



Dick Richardson discussing soils with the Mt Alexander Regen Ag group.

## Sustainable Ag Snippet...

### Regenerative Agriculture

National Regenerative Agriculture Day was celebrated last month on February 14. This day celebrates and raises awareness of regenerative agriculture. I thought it was fitting to highlight the North Central CMA regenerative agriculture project and the farmer groups involved. This project is heading into its final year, finishing on June 30, 2023.

The project has supported groups to produce several videos over nearly four years. Many of the groups have videoed events on a variety of topics with a diverse mix of guest speakers. The events have supported the groups and individuals on their journey into regenerative agriculture. The farmers have increased their knowledge and skills through attending events and conducting small and large-scale demonstrations. Through these activities, farmers now have the confidence to trial or adopt new practices that complement their existing farming systems.

The North Central CMA's Regenerative Agriculture project has provided some farmers with a new focus, revitalised their vigour and created new friendships. Several farmers involved in the project have been willing to share their journey about regenerative agriculture. For some it has been a complete change of thinking and practices. For others they have incorporated new practices or made small changes that complement existing practices.

Farmers have been on a shared or individual journey throughout this project. It's sometimes challenging but they've have maintained their focus on the long-term goals of regenerative agriculture. Through the many learnings farmers participating in the project also understand there are no short cuts or quick fixes. Time is what it takes to achieve their goals, to increase their knowledge and skills, build healthy soils and be more resilient to climate change.

The project has been successful in bringing the community together to share their knowledge and experiences. It has captured the journey of some of the farmers involved, which are illustrated through farmer videos and landholder stories. These can be viewed on the North Central CMA web page on the following link [Agriculture | North Central Catchment Management Authority \(nccma.vic.gov.au\)](https://www.nccma.vic.gov.au/Agriculture)

If you would like to know more about the project you can contact the Project Manager Felicity Harrop [felicity.harrop@nccma.vic.gov.au](mailto:felicity.harrop@nccma.vic.gov.au)

## Courses & Resources...



### Call for Abstracts and Posters for the 2022 National Landcare Conference – Closes Sunday 13 March

The call abstracts and posters will soon close for the 2022 National Landcare Conference.

The 2022 theme is “The Power of Landcare | Shaping Our Future” which affirms the importance of looking to the future when addressing the issues and opportunities open to Landcare and natural resource management. (NRM).

Landcare Australia have six concurrent streams including two new streams which provides many individuals, groups and organisations involved in Landcare and NRM, an opportunity to get involved as a stream speaker and share their learnings with a global audience.

**You can present in person at the International Convention in Sydney or as a virtual speaker online.**

If your abstract is selected by the assessment panel, support will be provided to the speakers presenting the paper.

Landcare Australia invite papers and posters for the following concurrent streams:

#### Landcare Farming and Emerging Environmental Markets

Innovation and technology; soil health; climate change adaptation and mitigation; young farmers; connecting farmers to emerging alternative markets.

#### Environment and Climate Change

Call to action for all Australians to be on the frontline together with Landcare to reduce the impacts of climate change and biodiversity loss.

#### Community Partnerships in Action

Building community capacity and resilience; communication and storytelling; volunteering; partnerships, building and sharing knowledge.

#### Landcare Impact

Landscape; biodiversity; community resilience; mental and physical health of individuals; economy.

#### Urban Landcare

Urban environments bring challenges and opportunities with a growing role for Landcare in urban settings.

#### First Nations people

Providing a platform that recognises the role First Nations people have played in sustainable natural resource management.

For more information or to submit an abstract please visit: <https://nationallandcareconference.org.au/2022-call-for-abstracts/>



### Nominate for the 2022 General Jeffery Soil Health Award

**Do you know someone in Australia who is helping to improve soil health and inspire others? It could be you! Nominations for the 2022 General Jeffery Soil Health Award are now open.**

Individual farmers, land managers, extension specialists or educators who are working on activities that include undertaking and promoting good management practice, raising awareness about the importance of maintaining and improving soil health, and/or educating others about soils.

All the nomination criteria can be found via [Soil Health Award | General Jeffery | Landcare Australia Landcare Australia](#)



## Events...



### Clean up Australia Day events

**Sunday March 6 is Clean up Australia day. Check out the local events happening in your area across the weekend.**

Visit: [Clean Up Australia \(cleanupaustraliaday.org.au\)](https://cleanupaustraliaday.org.au) to find your nearest event and step up to clean up!

### Moveable fencing and water for stock - field days

**Join the Macedon Ranges Shire Council in Gisborne or Kyneton to learn from local farmers and hear how they are using moveable fences and troughs to improve grazing on their properties.**

Once registered, the property address will be sent to you prior to the event.

- Gisborne: Thursday 3 March, 7pm
- Kyneton: Friday 4 March, 10.30am

Register here: [Healthy Landscapes - Macedon Ranges Shire Council \(mrsc.vic.gov.au\)](https://www.mrsc.vic.gov.au)

### Discussion and farm walks at Trentham East and Heathcote

**Hear from the property manager about their journey in regenerative agricultural grazing.**

It's a welcoming environment with an opportunity to learn from each other and discuss your own properties progress. Hosted by Macedon Ranges Shire Council.

- Trentham East: Friday 18 March 5.30pm
- Heathcote: Sunday 27 March 4pm

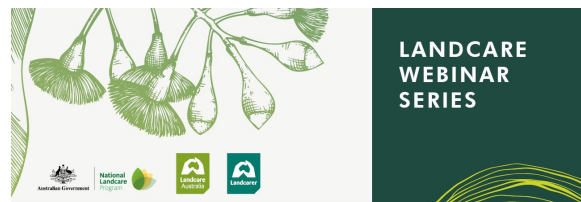
For all the information and to register visit: [Healthy Landscapes - Macedon Ranges Shire Council \(mrsc.vic.gov.au\)](https://www.mrsc.vic.gov.au)

### Landcare Webinar - International Women's Day

**Landcare Australia invite you to join them on Tuesday 8 March for an International Women's Day panel discussion with five**

### formidable women working in Landcare and natural resource management.

Hosted by Regional Agriculture Landcare Facilitator Kerstie Lee, panellists include Natalie Sommerville, our very own and fabulous Tess Grieves and more!



Subscribe to the Landcare Webinar Series to register for this webinar and check out our past webinars

### Loddon Plains Future Farming Regenerative Agriculture Group

#### Know Your Soils Field Day and Soil Pit Demonstration

Join the Loddon Plains Future Farming group, with Rebecca Mitchell (Agriculture Victoria) and Christian Bannan (South East Soil & Water) at a field day that will include soil pit demonstrations assessing soil health and soil structures under traditional and vegetation-covered soils.

The day will provide knowledge and confidence around:

- Understanding and managing for your soils.
- Assessing soils and soil profiles.
- Soil test interpretation.
- Introduction to soil biology.
- Demonstration of taking a soil sample for testing.



The field day will be held in the Salisbury West area at a location to be advise you can call Danny Pettingill on 0490 412 430.

**When:** Tuesday 22 March

**Where:** Salisbury West area

**Cost:** Salisbury West area

**RSVP:** Bookings are essential [Loddon Plains Future Farming Group Know Your Soils Field Day, 22nd March 2022](#)



**Bendigo Sustainable Living Festival**



**Bendigo Sustainability Group (BSG) is hosting the annual Sustainable Living Festival on Sunday 27 March.**

The festival aims to showcase the best sustainable living products, programs, goods, and services in central Victoria. Stallholders will showcase sustainable products, services, and initiatives that offer sustainable solutions for both businesses and householders across central Victoria.

Guest speakers include Millie Ross from ABC's Gardening Australia TV program and Sophie Bickford from Biolinks Alliance. You will also see lots of friendly local Landcare Group faces, with CMA staff on site as well. Drop by our stalls and say hello.

**When:** Sunday 27 March 2022. 10am-3.30pm  
**Where:** Garden for the Future, White Hills.  
**Cost:** Gold coin donation.



**The Way of the Ancestors workshop with Claire Dunn and Marilyn Nicholls**

**Castlemaine based social enterprise Mirawara invite you to Join Claire Dunn and Dja Dja Wurrung Elder Aunty Marilyn Nicholls for an**

**immersive 3 day camp in Walmer (near Castlemaine).**

The camp will include a cultural walk at Mt Dharrengower, how to create fire using ancient techniques, basket weaving with master weaver and Dja Dja Wurrung Elder Aunty Marilyn Nicholls, landscape ecology, bird language, nature connection activities, knot skills and tree climbing, ancestral work, kids activities and much more.

Organisers will be providing two delicious vegan evening meals cooked by the Murnong Mamas. Kids under 5: Free

**When:** Saturday April 9- Monday April 11, 2022  
**Where:** 1272 Muckleford-Walmer Road Walmer, VIC  
**Cost:** \$417.81 – \$449.46  
**What to bring:** Bring you own camping gear, water, breakfast and lunches.  
**RSVP: via Eventbrite:** [The Way of the Ancestors workshop with Claire Dunn and Marilyn Nicholls Tickets](#), Sat 09/04/2022 at 10:00 am | Eventbrite

**How do you talk about climate change?**

**'Community Conversations' is about encouraging ideas around climate adaptation in St Arnaud.**

BNG Landcare - Buloke & Northern Grampians Landcare Network is leading the project which aims to encourage conversations about climate change. The focus is on the local community and how we can work together to adapt to these changes.

At least four casual educational conversation sessions will be held centred on the climate resilience themes of biodiversity, agriculture, economy (resource utilisation) and health and wellbeing.

Keep update about these events via: [\(2\) BNG Landcare - Buloke & Northern Grampians Landcare Network | Facebook](#) or contact Landcare Network Facilitator Andrew Borg via [bnglandcare@gmail.com](mailto:bnglandcare@gmail.com)

This project is funded by the Sustainability Fund through the Supporting our Regions to Adapt Program. Find out more at <https://adaptgrampians.com.au/projects/>



## Funding opportunities...

### Volunteering Innovation Fund



The Victorian Government has an exciting new opportunity to inspire ideas and encourage innovation by funding community-led projects that consider new ways of volunteering in and for the environment.

Parks and forests in Victoria are supported and enhanced by a host of passionate volunteers. The Volunteering Innovation Fund is building on this incredible work and inviting everyone to enjoy Victoria's Great Outdoors through volunteering.

The Volunteering Innovation Fund will award \$2 million in funding over four rounds, with the final round closing in 2022. Round 3 is now closed with outcomes announced May 2022. Round 4 opens in Autumn 2022.

Parks Victoria are looking for innovators, nature-lovers and community minded people to expand and diversify environmental volunteering across Victoria. To apply:

1. Think of a creative idea that inspires more Victorians to volunteer in and for nature
2. Read the [Funding Guidelines](#) to make sure your idea aligns
3. Apply online through [ParkConnect](#)

### 2022 Woolworths Junior Landcare Grants



### Woolworths Junior Landcare Grants Open

To kick-off the school year, Landcare Australia and Woolworths are calling on primary schools and early learning centres to apply for a 2022 Woolworths Junior Landcare Grant.

With 1,000 grants on offer this is a great opportunity to secure funding for your school's environmental project.

These grants, of up to \$1,000 each, inspire kids from across the country to get hands-on with projects that

focus on sustainable food production, improving waste management practices or enhancing native habitats.

If your school is ready to grow the next generation of environmental champions, we encourage you to apply for a **Woolworths Junior Landcare Grant** for:

- a habitat restoration project
- planting a bush tucker garden
- planting a vegetable garden
- running a composting or recycling project.

#### Applications Open Date:

9 February 2022

#### Applications Close Date:

18 March 2022

#### Contact Email:

[grants@landcareaustralia.com.au](mailto:grants@landcareaustralia.com.au)

To apply visit: [2022 Woolworths Junior Landcare Grants | Junior Landcare](#)

### Serrated Tussock Community Grants 2022: Now Open

The Victorian Serrated Tussock Working Party (VSTWP) is providing community groups and organisations with the opportunity to apply for grants to manage serrated tussock.

The grants aim to support community groups and organisations build their capacity to achieve long-term voluntary management of serrated tussock.

Grants of up to \$5,000 (GST excluded) are available to deliver a project which meets the priorities and criteria outlined in these guidelines below. The grants promote collaboration between community groups, local municipalities and the VSTWP in the best practice management of serrated tussock.

A key objective of the grants is to support community groups and organisations that have been actively controlling serrated tussock over a number of years.

Please read the guidelines and application form, which include how to submit the grant application, contact details and the criteria for assessment.

For more information [click here](#), or please contact [ivan@serratedtussock.com](mailto:ivan@serratedtussock.com)