

North Central chat

OCTOBER 2017

A message from the Regional Landcare Coordinator

Hi everyone,

What a month September was. Kicking off with the Landcare Awards on the 1st, then straight into Landcare Week, followed by Chicks in the Sticks and rounded out with a wonderful conference in Townsville.

I will unashamedly start with 2017 Chicks in the Sticks, held beside Walkers Lake in the Avon Plains. A stunning day, perfect in fact, was just the beginning. The event attracted over 80 women from across the catchment many of whom had never been to Avon Plains and who were not a part of Landcare but have since signed up! Our group was welcomed to Country by the wonderful Rebecca Phillips and we couldn't have had a better start to the day. Rebecca spoke of her connection to Country as a Dja Dja Wurrung woman, the ties between Traditional Owners vision for healthy Country and that of Landcare groups and the importance of women in traditional and current roles caring for Country. We then headed off on a walk of the lake, guided by the Avon Plains Banyena Landcare Group discussing the remnant hollow bearing trees, water management of the lake, cultural values at the site and the significance of the lake to the locals for recreation.

Guest speakers discussed their personal stories which led them to each starting a small rural business, both coming from very different pathways. The common thread throughout the day was the importance of 'being open to opportunities' which generated great discussions as ideas and 'lightbulb moments' sprung to mind.

Thank you again to the women who continue to show demand for this type of event. It is a pleasure creating it each and every year. Less than 24 hours later I was in Townsville, with Ashely Rogers (GBCMA) presenting the Chicks in the

This Month's Contents:

News	2
Course & Resources	9
Events	10
Funding opportunities	13



Sticks concept to an international audience at the 2017 APEN Conference, that brings together rural extension officers working in agriculture. The presentation really resonated with people and we were swiftly invited to the Cook Islands and Malaysia, 'Chicks' may just be going global!

Planning ahead, it's down to business as the CMA in partnership with Landcare and other stakeholders, prepares funding bids for the National Landcare Program Round 2. Landcare Network Chairs and Facilitators have been met with as key partners in any future projects we roll out and will be heavily included in our proposals as they develop.

Enjoy the read,

Tess Grieves

Regional Landcare Coordinator

North Central Catchment Management Authority
03 5448 7124 tess.grieves@nccma.vic.gov.au



News...

Biodiversity On-ground Action - Community & Volunteer Action Grants funding announced

On Thursday September 14, the Hon. Lily D'Ambrosio MP, Minister for Energy, Environment and Climate Change, announced over \$4 million of Biodiversity On-ground Action - Community and Volunteer Action Grants for 110 community projects to protect threatened plants and animals.

Sixteen north central Landcare groups and networks were successful in receiving a share of the funding, which supports project ranging from citizen science surveys of threatened fauna in the central highlands, riparian protection along the Campaspe and Coliban rivers, and protecting spring soaks in the north-western goldfields.

Congratulations to all grant recipients, the outcomes of these projects will have significant impact on helping protect, improve and expand habitats for Victoria's native plants and animals.



Upper Loddon Landcare Consortium received funding to continue their rare and threatened Tree Seed Security project, which has already had amazing results across the Upper Loddon catchment area.

A full list of the projects can be found online at: https://www.environment.vic.gov.au/biodiversity/biodiversity-on-ground-action#Community_and_Volunteer_Action_Grants

Welcome Kristy Scalora, 'Murray Mallee Landcare Network' facilitator



Kristy has worked in the natural resource management field for the past 10 years as manager of the Murray Mallee Seedbank based in Nyah. During this time she has developed a keen appreciation for the many facets of environmental maintenance. Whilst continuing her role at the seedbank, Kristy has been appointed as Landcare facilitator for the Murray Mallee area. This position is one of 10 new Landcare Facilitator positions which are funded through the Victorian Governments Landcare Program. The Murray Mallee area consists of 15 Landcare groups from Tyntynder in the north to Gunbower in the south –east and across to Quambatook in the west.

Kristy resides on the family vineyard in Tooleybuc with husband Bart and their two children. *"Being part of a farming family and working in the environmental field has allowed me to develop a practical understanding of the need to have a balanced approach to both conservation and agriculture. It's not always tree huggers v farmers and quite often it's our farmers who have a far greater commitment to environmental health, because their livelihood depends on maintaining healthy soils and waterways."*

Kristy says she is looking forward to assisting Landcare and other community groups to work together towards a common goal of caring for and learning about our environment whilst enjoying the social connectivity that being part of a Landcare group can provide.

If you are in Kristy's region, get in touch via 0428 547 549 or email seedbank@bigpond.net.au





Local residents boost scientific knowledge

Article and photos: James Nelsson Facilitator of Loddon Plains Landcare Network

Locals have known for a long time that you don't drive on the granitic sandy soils of Mt Kooyoora or Mt Korong, unless you fancy getting bogged.

Residents around the Kooyoora State Park and Mt Korong noticed that boggy wetland areas appeared and persisted for some time after the above average rainfalls experienced in Victoria during 2010 – 2011 and again last year.

Assessments of the area were undertaken by ecologist Dr Paul Foreman, who recently described the naturally occurring and rare groundwater dependent, intermittent spring-soaks. The official name for these ephemeral wetlands are the 'North Western Goldfields Intermittent Soak Community'. As a result of the work by Paul Foreman, the wetlands were officially accepted as a valid community by the Scientific Advisory Committee, and listed under the *Flora and Fauna Guarantee Act 1988* on the 24th November 2016.



Community involvement - Local community gather on site at Mt Kooyoora where Ecologist Paul Foreman discusses the monitoring techniques (Image: J Nelsson).

This ecosystem supports unique and endemic plant species and are scattered across the lower foot slopes of the higher granitic and metamorphic ranges of Kooyoora State park, Mt Korong and on surrounding public and freehold land. Unfortunately, these communities are under threat and were placed on the *March 2017 Schedule 2 Threatened List*. It's not great that this newly described community is threatened, but it is important that it is now listed to assist in its long term protection.

The "wet spell" of 2016 saw a re-emergence of the soaks, which enabled our local citizen scientists to

"go and have a look" to see what flora species had re-appeared.

Supported by Norman Wettenhall Foundation funding, members from local conservation groups, Friends of Kooyoora, Mount Korong Eco-Watch, Kara-Kara Conservation Management Network, Wedderburn Conservation Management Network and the Loddon Plains Landcare Network were invited to attend a couple of workshops in the Kooyoora State Park last month. These Citizen Science workshops are aimed to build capacity within the local community, giving participants the skills, knowledge and abilities required to look after the key aspects of the soaks.

The group discovered that that prickly tea-tree (*Leptospermum continentale*) and golden spray (*Viminaria juncea*), two shrubby perennial plants that are indicator species of these ephemeral soaks, were re-regenerating from seed. This was very significant as both species require wet conditions to germinate and are highly susceptible to browsing by macropods, rabbits and hares.

Residents have been working together, creating this citizen science project over the past few months to gather evidence, which shows the importance of controlling grazing pressure on these plants and to continue to protect the soaks on public and private land.

The spring-soaks have been heavily impacted by grazing and climate change and are now considered in danger of extinction. They have recently been listed as a threatened community under the *Flora and Fauna Guarantee (FFG) Act 1988* as "Granite Foothills Spring Wetland [North-east Victoria] Community".



Human footprint- Climate change is seen as one of the threats to these newly listed ephemeral wetlands (Image: J Nelsson).



For further information, please contact Trudy Nelsson, Secretary of the WCMN on trudynelssonwcmn@gmail.com, mobile 0419 800 980 or James Nelsson Facilitator of Loddon Plains Landcare Network on facilitator@LPLN.org or mobile 0490 412 430.

Child Safe Standards Update

Landcare Victoria Inc. (LVI) recently published a copy of a guidance note relating to the Child Safe Standards.

The guidance note is a starting point for Landcare groups and networks to engage with the Child Safe Standards. It is not designed to cover all child safety issues, but can be adopted and referred to by groups and activity leaders can have it in their back pocket, particularly for groups who have only occasional contact with children under 18. Visit: <https://www.landcarevic.org.au/lvi>

LVI update: What's happening nationally

Landcare Australia and the National Landcare Network (of which LVI is a member) are currently exploring opportunities which may lead to the merge of the two organisations. Effectively this would mean that the grassroots Landcare movement (in excess of 150,000) will bring its advocacy skills and its grassroots membership to blend with Landcare Australia, one of whose principal roles is to secure corporate support for landcare activities. In much the same way as the merge here in Victoria has helped remove confusion, we expect the same will occur at the national level. Such a merge would meet with the approval of our many stakeholders and the government.

New Board appointments for CMA

The Minister for Water announced the Water Corporation and Catchment Management Authority Boards on Monday 11 September 2017. The new boards will be effective from 1 October 2017. For the full list go to: <https://www.water.vic.gov.au/water-industry-and-customers/board-appointments-2017>

Sincere thanks goes to David Clark, outgoing North Central CMA Chairman, whom initiated and chaired the bi-annual Landcare Network Chairs meetings, and I wish to extend thanks to all outgoing CMA Board members for their interest in and support of Landcare across the north central region.

The Loddon Murray Community Leadership Program (LMCLP) is currently recruiting for 2018 – 2 North Central CMA Scholarships.

Lucy Mayes, Program Manager

LMCLP is a highly sought after 10 month (part time) leadership development program that aims to support those who are passionate about and proactive in their community, industry or sector. The program builds participant skills and confidence, introducing them to regional issues and innovative ideas for action, leaders from all walks of life, and expanding their current networks and impact.

In the recruitment phase we look for 'can do' people who are already, or would like to become more proactive members of their community or industry. Some may already be on their leadership path; others may not consider themselves 'leaders' but demonstrate leadership qualities.

We recruit for diversity – we try to offer the opportunity each year to a balanced and diverse group of people from all walks of life, all ages (from 18 up), representing a broad range of industries including business, agriculture, health and community services, education, government and volunteerism. Go to the website for further information: <https://clm.org.au/lmclp/apply/>

The North Central Catchment Management Authority provides two scholarships to LMCLP for members from their stakeholder groups, such as Landcare, or persons active in environmental or natural resource management issues. This link outlines the current scholarships available for 2018: <https://clm.org.au/scholarships/>





Scholarship recipients should apply online for the program, noting their interest in being considered for a scholarship. Applications for both the program and the scholarship will be assessed after applications have closed on **31 October 2017**. For all further information contact Lucy Mayes is the Program Manager for LMCLP and can be contacted on program@cilm.org.au or 0437 871 650.



Farmers are planning

More than 20 farmers have now signed up for Plan2Farm, and with training for consultants and Workbook Advisors complete these farmers can expect to be contacted very soon to arrange a visit by their assigned independent advisor.

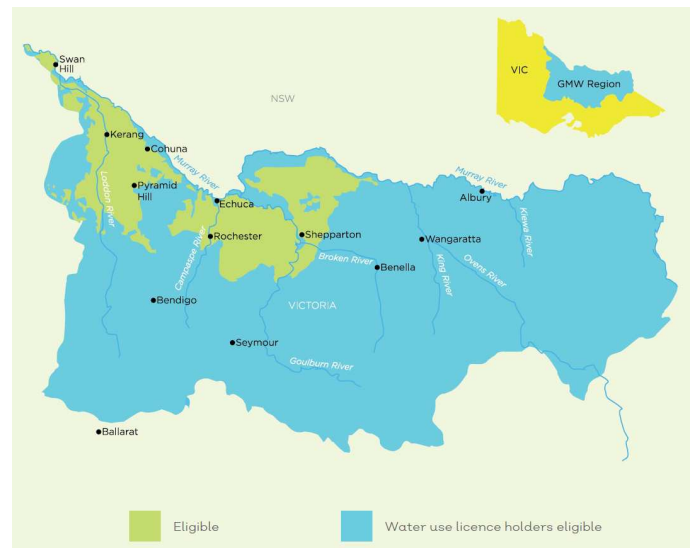
But what is Plan2Farm?

Plan2Farm is a project that provides personalised specialist advice and support to help farmers develop a strategy for their whole farming enterprise. By understanding their farm vision, farmers will be better equipped to make good informed decisions encompassing all aspects of their business.

The Plan2Farm process involves an independent and suitably skilled person sitting down with the farming family to complete a Workbook, answering questions about the whole farming enterprise to determine key actions those farmers need to take to achieve their vision for the farm. Farming businesses will then be supported to implement these actions for up to three years.

All costs for completing the Workbook (including the development of an action plan) are covered by the project. Implementing the actions will be at the cost of the farming business.

Plan2Farm is being rolled out across the Goulburn Murray Water regulated area (as depicted in the map). Farmers within the Goulburn Murray Irrigation District are strongly encouraged to apply; with all farmers holding water use licences within the broader Goulburn Murray Water regulated area also eligible to apply. Up to 600 farmers will be able to participate in Plan2Farm.



To register your interest in Plan2Farm follow this link www.surveymonkey.com/r/LPGZYMB or contact Shari Rankin on 03 5440 1885 or shari.rankin@nccma.vic.gov.au

Sharing the 'Living Next To Nature' message

Article; Nicole Howie, North Bendigo Landcare Group

During 2015-16 Northern Bendigo Landcare Group was pleased to be on the steering committee for the Victorian National Parks Association's Bendigo Bushland Ambassadors project.

Part of this project was the production of the 'Living Next to Nature Booklet', a fantastic resource detailing how City of Greater Bendigo residents can be good neighbours to Bendigo's unique box-ironbark forests and make the most of the bushland surrounding our city by connecting with environmental and recreational groups.

Wanting to extend the limited print run that was possible at the time, NBLG successfully applied for City of Greater Bendigo Community Grant funding to have 1000 booklets printed. We also worked with VNPA to design and print 1000 postcards advertising the online platform found at www.bendigonature.org. We now extend an invitation to all Landcare / Friends Of / environmental groups within the City of Greater Bendigo to contact us should you wish to receive copies of the booklet and/or postcard for distribution through your networks at volunteer activities and community events.

Please contact Nicole Howie at dnhowie@bigpond.com to request your copies.



RiverScan - How 'Citizen Scientists' can help us improve native fish populations

North Central Waterwatch and the Native Fish Recovery Plan have teamed up to create RiverScan - a program to engage local community members in monitoring the health of waterways to support native fish in north central Victoria.

The *Native Fish Recovery Plan - Gunbower and lower Loddon* is a long-term project aimed at improving native fish populations and river health in over 200 km of streams and wetlands in the Gunbower and lower Loddon area of north central Victoria.

Through RiverScan, community members have the opportunity to become Citizen Scientists by helping us monitor the response of waterbugs and water quality at selected locations in Box-Pyramid Creek, Gunbower Creek, the lower Loddon River and the Little Murray River.

Waterbugs (or macroinvertebrates) are excellent indicators of river health and are one of the ways we can measure the success of works undertaken through the Native Fish Recovery Plan. The RiverScan program will see community monitors receive training from leading aquatic ecologist and co-author of *The Waterbug Book*, Jon Gooderham and then undertake monitoring each spring.

Water quality monitoring helps us to understand how conditions change over time. Monitoring results can alert waterway managers if water-quality parameters are at levels that may impact the survival of native fish, and can also detect improvements in the water. RiverScan participants will have access to a water quality monitoring kit to collect and test monthly samples of water and report the data on the Waterwatch Victoria web portal.

Following spring monitoring, North Central Waterwatch and the Native Fish Recovery Plan will release an Annual River Health Snapshot Report that will highlight changes in the health of these waterways using Citizen Science data so the community are kept informed about the impacts of the program.



Want to get involved?

Contact the Native Fish Recovery Plan Project Manager via the North Central CMA. Phone: 5448 7124 or email: info@nccma.vic.gov.au

Weed warriors, now is the time to HAVE YOUR SAY!

The Australian Government is funding a national weed data collection survey. The purpose of this survey is to gain an understanding of the data collected across Australia for national priority weeds and to determine what weeds and related issues are of importance to your group or organisation.

Open until November 7 2017:

<http://www.surveygizmo.com/s3/3286676/State-NRM-weed-data-collection-survey>





Hello,

I hope you are enjoying some beautiful sunshine and a cup of tea as you sit down to read this edition of the North Central Chat. This Waterwatch update highlights all the wonderful projects and activities that have been happening across north central Victoria in September.

Over the past month, I have had two work placements students from Bendigo TAFE working across all aspects of the Waterwatch program. Kelly is studying Diploma of Conservation and Land Management at Bendigo TAFE. Kelly has been working with Peter Rose and I on the Waterwatch and the Native Fish Recovery Plan project partnership. Anthony Brown is studying Certificate 3 Conservation and Land Management and has been working with Ange and I to deliver the Campaspe Carp Catch event 2017. Anthony is particularly interested in fish and has been a huge help bringing together a whole bunch of information for the updates to the NatureBlitz App.

Sophie and I have been busy planning and organising lots of exciting events coming up, check out the list below to find something for you:

River Detectives – ask the expert with John Gooderham!

When: Tuesday, 24 October 2017

Time: 10 am for session one or 2.15 pm for session two

Who can attend: Registered River Detectives schools

How to register: All participating schools have been sent an invite through Event Brite. Please register through this site (see below for more details)

ALT Waterbug Workshop # 1

Waterwatch and Native Fish Recover Plan's RiverScan Project

When: Thursday, 26 October 2017

Time: 9.30 am (sharp) - 3:30 pm

Who can attend: The North Central CMA is seeking volunteers who have an interest in the environment to register to participate in this ongoing monitoring project
Please register your interest for this event to cass.david@nccma.vic.gov.au

Waterbug Community Information Session - Glenlyon

In partnership with the Glenlyon Landcare Group

When: Friday, 27 October 2017

Time: 6.30 pm (sharp) - 8:30 pm

Who can attend: Everyone

Where: Meet at the Glenlyon Fire Station, 23-25 Barkly Street, Glenlyon, VIC 3461

ALT Waterbug Workshop # 2

Become involved in the National WaterbugBlitz program

When: Saturday, 28 October 2017

Time: 10:00 am (sharp) - 3:30 pm

Who can attend: Anyone who wants to get involved in our annual National WaterbugBlitz program

Please register your interest for this event to cass.davis@nccma.vic.gov.au.

Here are some key dates for other environmental days celebrated in Victoria throughout October:

- 2 October World Habitat Day
- 12 October National Ride to Work Day
- 16 October World Food Day
- 23 – 29 October Bird Week

I will be on leave over the school holidays, if you require any assistance, please don't hesitate to call James or Sophie.

I look forward to catching up with you at one of our events!

Cass Davis

Regional Waterwatch Coordinator
(03) 5440 1863
0434 730 526
cass.davis@nccma.vic.gov.au



AUSTRALIAN CITIZEN SCIENCE CONFERENCE #CitSciOz18

7-9 FEBRUARY 2018 | ADELAIDE

The countdown is officially on. In six months' time a gathering will be held in Adelaide for the 2nd Australian Citizen Science Conference. Will you be there?

Organisers have been working hard getting the Abstract Submission Portal ready for launch. All the details will be provided therein but if you're keen to present and would like to get a head start on your thinking, we'll be offering a range of presentation opportunities (long talks, speed talks, posters, workshops & symposia) and invite you to submit an abstract on any citizen science topic that fits into one or more of the following themes:

- Social research in citizen science
- Data management & sharing
- Engaging citizens
- Showcasing science outcomes
- Working with the education sector
- Field based citizen science
- Communication & promotion
- Partnerships & collaboration

For more detail, please check out the [abstracts](#) page on the conference website.

Helping hands: Hello from Anthony

Hi everyone,

My name is Anthony Brown, currently studying Cert 3 in Conservation and Land Management in Bendigo. For the past three months I have had the pleasure to be doing work placement at the North Central CMA with Cass, Sophie, Amy and Britt.

I am enjoying my time greatly and have had a chance to work on some interesting activities including preparing for the Campaspe Carp Catch 2017, sourcing and entering data for the NatureBlitz App, helping out with River Detective days at Gunbower Primary School with Turtles Australia and also helping Cass with a Waterbug session at Bridgewater Primary School.



Investigating the waterbugs of the Loddon River @ Bridgewater

I look forward to continuing my work placement here at the North Central CMA while I continue with my studies.



River Detectives get the chance to interrogate John Gooderham in our 'ask the expert!' online webinar!

Get your class or group of students excited by chatting to a freshwater ecologist from the comfort of your classroom.

In October, John is joining the River Detectives team to talk to groups from across the state and share lots of fun and interesting facts about waterbugs. We will get you to interact during the session and want you to ask lots of questions (get ready for the webinar by going out to explore what is in your local waterway).



John Gooderham



Date and time: Tuesday, 24 October at 10AM or 2.15 PM (for about 1 hour)

Register by emailing

riverdetectives@nccma.vic.gov.au for more information and to get on the invite list.

Course & Resources...



1080 Users Training- EOI's Now Open

Since 2012, the North Central CMA has funded numerous Chemical Users Courses for Landcare members and farmers to gain their Chemical Users Permit (ACUP accreditation)

Interest has grown from these courses, with a call for provision of 1080 accreditation, so we are seeking EOI's from eligible ACUP holders to participate in an online course in November 2017.

The course can be completed in your own home, with internet connection required (no dial-up). All course materials, workbooks and trainer phone contact will be included.

Landcare members will be subsidised for their course costs.

Please express your interest and contact details via email to tess.grieves@nccma.vic.gov.au

New Map of Wheel Cactus in Victoria

The Tarrangower Cactus Control Group (TCCG), based in the Maldon-Baringhup region of central Victoria, is dedicated to the elimination of the noxious weed Wheel Cactus (*Opuntia robusta*).

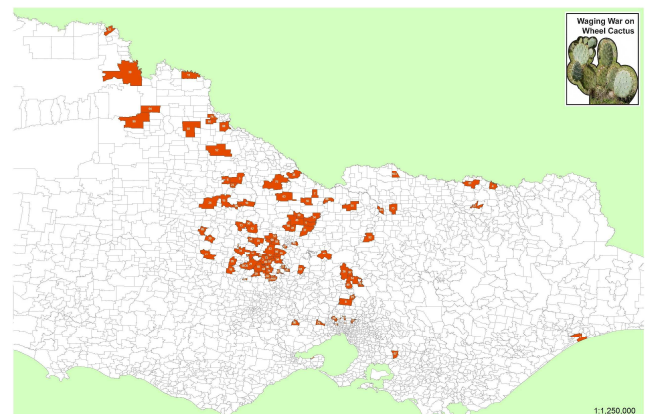
With funding from the Norman Wettenhall Foundation, the group has just completed a one-year project to increase awareness and map Wheel Cactus infestations around Victoria.

Project officer Max Schlachter connected with many natural resource and land managers around the state and collated 345 records of Wheel

Cactus, which included 29 different Shires and 105 different localities. Of these, 237 were new records and were mostly distributed in a band running through central Victoria from the northwest corner towards Melbourne.

“To create the map, we tried to find as many records as possible. Existing records came from government departments and the Atlas of Living Australia (ALA). But more importantly, we also looked for new locations” said Max.

“As it turned out, about 70% of the locations we recorded had not previously been mapped at a state level. Many of the new records came from council officers who have been mapping and treating Wheel Cactus in their own Shire. Other records came from members of the Landcare community who responded to our request for help.”



While the group has been very successful, TCCG President Lee Mead says that achieving their ultimate goal of eradicating Wheel Cactus is proving difficult because it's such an invasive species. Wheel Cactus seed is readily spread by flocks of ravens that eat the fruit, and also foxes. It only takes a few properties with mature, fruiting plants to keep re-infesting neighbouring properties and effecting distribution further afield.

The Cactus Warriors can be contacted through their website www.cactuswarriors.org.





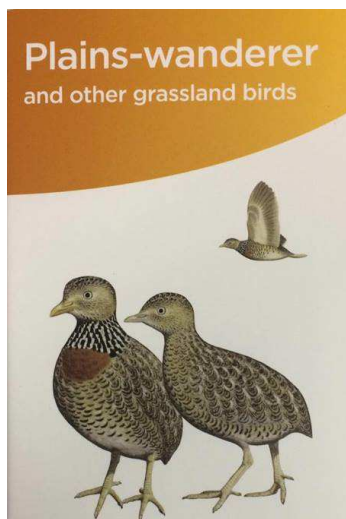
New grassland fauna booklet

by Caroline Wilson, BirdLife Australia

BirdLife Australia and the Threatened Birds Network announce the completion of the 'Plains-wanderer and other grassland birds' information and identification booklet.

This 27-page full colour education material was developed with generous funding from the Australasian Bird Fair and is an excellent resource for the community.

Copies will be available free-of-charge to members who assist with surveys in Terrick Terrick National Park but if you're keen to get a copy, please contact BirdLife Australia on 03 9347 0757.



Top tip: PDF conversions

If you are anything like me, converting to and from PDFs can be quite frustrating, particularly when signatures and details are required on forms and applications. My learned colleague Tony put me onto <https://www.ilovepdf.com/> to assist. It's been very handy, is 100% free of charge and might save you a tonne of time handwriting forms or having Mac versus PC issues. *Hope it helps*

Online Rabbit Decision Support System (DSS)

The Centre for Invasive Species Solutions has launched a DSS, which can help land managers with decisions on where, when and how to manage rabbits, guided by best practice. PestSmart has interactive tools that provide information, model analysis and decision

guidelines tailored to your specific land management needs. Raed more at: <https://www.pestsmart.org.au/pest-animal-species/european-rabbit/dss-for-rabbit-management/conservation-land-dss/>

Events...

Mapping workshops in Castlemaine

Due to popular demand, in partnership with Connecting Country, I am heading to Castlemaine to run another four online mapping sessions for Landcare members. The workshops will assist with both general mapping skills and 2016-17 grants reporting using the **CMA's iMap system**.

Anyone is welcome from the Landcare community but please ensure you RSVP to asha@connectingcountry.org.au or 5472 1594 if you would like to attend at one of the following times:

- Tuesday 10th October 2017, 2pm-3:30pm
- Tuesday 10th October 2017, 5pm-6:30pm
- Thursday 12th October 2017, 2pm-3:30pm
- Thursday 12th October 2017, 5pm-6:30pm

Please bring along something to map (i.e. a hard copy map or idea of what you want to map) and a laptop if you have it. We will have some computers available, but the laptops will be good to have as back-up.

If you'd like to have a play around with mapping your group's works before the workshop, click on this link: [Historical NRM Activities for Landcare](#).

The map displays and captures historical on ground activities such as fencing, revegetation, weed and pest animal control which Landcare completed over time. It also displays North Central CMA funded Landcare activities.

Cultural Heritage Field Day

Avon Plains Banyena Landcare Group is extending an invitation to attend a Cultural Heritage Field Day on Wednesday 4 October at Banyena Hall.

A Cultural Heritage Survey was conducted at the Avon Plains Lakes in July with archaeologists Anne Lambert and Di Smith plus Raquel Kerr and Karen Smith, both of the Dja Dja Wurrung Clan. Di was the Program Manager Cultural Heritage Dja Dja Wurrung. They had an extraordinary ability to recognise the signs of past occupation by



Indigenous people and to share the stories behind these artefacts. They were all surprised at the wealth of artefacts found in this area.

Places are limited. There is no charge and morning tea and lunch will be provided at the Banyena Hall. Participants will need to come suitably dressed for a leisurely but educational two-hour walk

When: Wednesday, 4 October

Where: Banyena Hall, 3568 Banyena Rd, Banyena VIC 3388

RSVP: Book online via:

https://docs.google.com/forms/d/e/1FAIpQLSecMqDWks6EaJgHjZJ3EuG1m78L2CYz7UIzH9PMMYlk3VirWw/viewform?usp=sf_link. Alternatively call Prue McAllister on 0413 971 236 or email to avonplains@gmail.com

Catch a carp this Gone Fishing Day

It's in its third year and it gets bigger each year – the annual Campaspe Carp Catch is on again, so dust off your rods, find your special spot and register to win some great prizes.

The North Central Catchment Management Authority (CMA) is organising the free carp fishing competition along the Campaspe River, from Kyneton to Echuca, on Sunday 15 October, which is also National Gone Fishing Day.

It will run from noon to 3pm, with six registration, judging and barbecue sites along the river.

North Central CMA Project Manager Angela Gladman said the event is a fun way to highlight the scourge of the introduced species.

“Carp are the rabbits of our rivers. They are a major component of the Murray-Darling Basin’s fish population and cause significant damage to rivers, wetlands and the natural environment,” she said.

“We are working with community organisations such as the Echuca Moama Landcare, Strathallan Family Landcare, Rochester and District Angling Club, Longlea & District Landcare and Kyneton Angling Club, to put this carp catch event on, with funding assistance from Victoria’s peak recreational fishing body VR Fish.

When: Sunday, 15 October 12.00 noon- 3.00pm

Where: The registration and judging sites are:

- Pig Shed, Kyneton Botanic Gardens
- Axedale River Reserve, off William Street

- Ayson’s Reserve at Elmore, on Burnewang Road
- Campaspe River Reserve near the Rochester water tower
- Strathallan Community Hall on Strathallan Road
- Echuca Lions Park at Ogilvie Avenue

Cost: FREE event. *please ensure anyone fishing over 18 years of age has purchased their own fishing licences

What to bring: Corn bait and BBQ lunch will be provided. Bring along hats, water, a chair, rods and fishing gear.

Prizes: There will be prizes for the Best Catch and the Biggest Bag.

Spring at Pilchers Bridge

The Axe Creek Landcare group invite you to the second biennial ‘Spring at Pilchers Bridge’ event.

The event is designed to showcase the Myrtle Creek property which is a Trust for Nature covenanted property. The MC for the day is Mr. David Trotter, former manager CSIRO.

Enjoy an interesting program including:

- A bird identification walk around the Trust for Nature covenanted property guided by experienced birder, Ms. Salli Dearthcott, followed by a quick pancake breakfast.
- A video on Indigenous Forest Burning Techniques presented by Mr. Trent Nelson, Indigenous Team Leader, Parks Victoria and Mr. Mick Bourke, District Planner, Forest Fire Management, DELWP.
- A talk on orchids of the box-ironbark forests by Ms. Julie Radford-Whitfield, Manager, Amaryllis Environmental.
- A talk on Bushfire Preparedness by a representative of the CFA.
- A talk on wildlife, habitat and nest boxes by Mr. Miles Geldard, designer and builder of nest boxes and previously a Parks Ranger.
- A talk based on the Flowering Patterns of Trees (especially eucalypts) growing together in the area by Mr. Bob McDonald, an apiarist with 60 years experience.



Free entry, pancake breakfast, tea, coffee and sunscreen. All welcome but **no dogs please**.

When: Saturday, 7 October 2017 8.00am to 4.00pm

Where: 178 Huddle Road, Myrtle Creek.

What to bring: Lunch can be purchased from the Eppalock Primary School Sausage Sizzle. Bring your own binoculars, sturdy shoes, camera and water bottle.

RSVP: Chris Kirwan (03) 5439 6494 or email: cwkirwan@bigpond.com

Sheep Nutrition and Management workshop

Renowned sheep nutrition expert San Jolly (South Australia) will return to the Mid Loddon Landcare Network area on Wednesday October 25.

Helping producers optimise livestock productivity, profitability and sustainability and improve the resilience of their operations is the focus of the upcoming workshop.

When: Wednesday, October 25 from 9.30am

Where: Laanecoorie Hall and later in field.

Please bring any recent feed testing results to share in group discussions. Note: The first ten samples will be eligible for a \$100 cost refund.

RSVP is essential to: Judy Crocker via email jcroc22@gmail.com or phone 0428 506 525

Newham Landcare November Activities

Upcoming events in the Newham 'Landcare Dairy of Events' look quite interesting and for further details you can visit their [website](#).

Saturday, 11 November

Chilean Needlegrass workshop, at Carlsruhe.

Wednesday, 22 November

Native Grassland reconstruction with Dr Paul Gibson-Roy at Newham Hall.

Friday, 24 November

"What can we learn from listening to nature?" Andrew Skeoch will talk on birds and birdsong. Newham Hall, 7.00pm for a 7.30pm start.

Would you like to take part in an orchid survey?

Amaryllis Environmental is hoping to gain volunteer support for upcoming orchid surveys on properties owned and managed by Bush Heritage, Trust for Nature and Parks Victoria located in the North-West region of Victoria.

Surveys are taking place

- Wednesday, 4 October at Bush Heritage J.C Griffin Nature Reserve 10am – 4pm
- Thursday, 5 October in the Kooyoorra area 10am – 3pm

Please contact the organiser Julie Radford Amaryllis Environmental on 0400 909 073 or Email: amaryllisenvironmental@hotmail.com



The Aussie Backyard Bird Count aims to engage schools and the wider community in the natural world while getting to know the birds in their area through participation in a simple, fun, all-ages activity that can be done anywhere.

By taking part in the Aussie Backyard Bird Count you will become citizen scientists. Citizen science in schools creates opportunities for students to connect with the natural world, gain scientific skills, and learn about topics such as life cycles, habitats, adaptations, and interrelationships.

Taking part is easy, either submit your own count using the [website](#) or download the [Aussie Bird Count](#) app. The app currently functions as a Field Guide/Bird Finder. The full version of the app will be available from 1 October.



More information, resources on bird friendly gardens and registrations are on the [website](#).



Unlocking the mysteries of the Cobaw State Forest

Ever wondered what animals live in the Cobaw State Forest? Come along to a free information session and find out about the outcomes of our fauna survey project, and the significance of the Cobaw State Forest

When: Saturday, 7 October 2pm–3.30pm.
Afternoon tea included

Where: Newham Mechanics Institute 1292 Rochford Road, Newham

RSVP: To Macedon Ranges Shire Council
Online: mrsc.vic.gov.au/environment-events
Email: environment@mrsc.vic.gov.au
Call: 95421 9660

Funding opportunities...

Community Skills Development Grants (for volunteer community-based environment groups & networks)

On Friday September 8, the Hon. Lily D’Ambrosio MP, Minister for Energy, Environment and Climate Change, launched the Community Skills Development Grants, which in 2017/18 will provide \$600,000 in funding for groups and networks to access training and skills development.

The Community Skills Development Grants aim to enable groups and networks to strengthen their capacity, develop their skills, and operate more effectively, through:

- Supporting learning, development and training opportunities, and
- Encouraging knowledge sharing and skills

development.

Who can apply: Victorian volunteer community-based environment groups and networks that are involved in the delivery on-ground environmental works can apply.

Funding available: \$600,000 will be shared across the two funding streams outlined below:

- Stream 1 (Individual Group Grants) – individual groups can apply for up to \$5,000.
- Stream 2 (Network or Partnership Grants) – networks or partnerships of networks and groups can apply for up to \$20,000.

Guidelines & application forms: the Guidelines can be accessed via <https://www.environment.vic.gov.au/grants/community-skills-development-grants> and include links to the online SmartyGrants application forms.

Please read the Guidelines before commencing the application form.

Applications close: 5pm Thursday, 12 October 2017.

For more information: see the Guidelines, contact the Victorian Grants Information Line on 1300 366 356 or email landcare@delwp.vic.gov.au



AgriFutures[™] Rural Women's Award

The AgriFutures Rural Women’s Award celebrates women who demonstrate a commitment to primary industries and rural communities and have the potential to expand their contribution and leadership.

If you are a woman involved in primary industries and/or rural Australia and have a vision or project that will contribute to one of the key areas listed below, you could receive \$10,000 towards realising your goals. The project or initiative may be commercially or non-commercially focused, and must align with AgriFutures Australia’s strategic priorities such as:

- Innovation
- Creativity
- Community sustainability



- Education
- Productivity
- Agribusiness
- Regional development
- Technology

Nominations are open **until Friday 29 October 2017**, visit <http://www.rirdc.gov.au/rural-women's-award>



The annual WICKED (Waste In Campaspe - Know, Educate, Do) Sustainability Awards are now open.

The awards aim to acknowledge and reward community members working towards environmental sustainability. This year's theme is "reducing our environmental footprint", which is open to all schools in the Shire of Campaspe and Moama as well as individuals, community groups, businesses and industries in the Shire of Campaspe.

There are three categories:

Individual/Community Group – submit photos with a short story to win a cash prize of \$300.

School (individual student, class, group or entire school) – submit posters, artwork, stories or videos to win a \$500 cash prize for your school to put towards a sustainability project!

Business/Industry – submit photos with a short story to win a \$400 advertising voucher!

Entries close: Monday, 30 October 2017.

Winners will be announced at an awards ceremony at the Campaspe Regional Library in Echuca on Monday, 13 November at 7pm.

Please refer to the category entry forms for the conditions of entry. Entry forms can be found at www.campaspe.vic.gov.au/wicked.



The NAB Foundation's Sustainable Regions Grants strengthen regional communities by enabling and inspiring them to live sustainably through enhancing the natural environment.

NAB is committed to strengthening regional communities. It does this by valuing natural capital, helping regions better manage their natural resources, and promoting biodiversity in the face of challenges such as land degradation, declining access to water and water quality and climate change.

These grants from the NAB Foundation support the development and implementation of regional approaches to:

- strengthen co-ordination and collaboration between environmental groups, business, landholders and government
- involve the community in practical on-ground action to improve the environment and;
- implement regional solutions to environmental challenges.

These grants will consider initiatives that include, but are not limited to those that address water quality, climate change and biodiversity enhancement. Grant amounts start from \$100,000 to \$1,000,000 and are paid over a maximum period of up to three years.

Grant types, eligibility criteria and application information is on NAB's Grants website <https://www.nab.com.au/content/dam/nabrwd/About-Us/corporate-responsibility/community/images/nab-foundation-sustainable-regions-flyer.pdf>

Applications open 9am Monday, 18 September and close at 5pm Friday, 27 October 2017.

Have you got something to share?

Submit your articles and photo for the November Chat by Friday, October 21 via email to tess.grieves@nccma.vic.gov.au