

# North Central Chat

Keeping you up to date with all the Landcare and WaterWatch news



May 2024

## A message from the Regional Landcare Coordinator

Hi everyone,

April has been a busy time, with some exciting events to attend, workshops to deliver, and getting ready to assess all the Landcare Grant applications.

I was pleased to be able to attend the Buloke Northern Grampians Landcare Network Hall of Fame and AGM event early in the month. It was a well organised day and very exciting to witness the presentation of several special awards. These included the 12 first Hall of Fame inductions. There were also four annual awards that were presented for the first time. It was wonderful to be among such passionate and enthusiastic Landcare volunteers, and fantastic to see them being acknowledged and celebrated in this way. Well done to the team and thanks for having me along. You can read more about these awards in the News section of the Chat.

The past few weeks have been busy preparing for the Victorian Landcare Grants. I delivered three workshops to support groups in applying for these grants, including how to map proposed projects. I'll be running some more workshops later in the year to support groups in completing their acquittals and mapping. Those who attended the recent events were pleasantly surprised about how useful iMap is and how easy it is to use. If you've been thinking iMap is too hard, please reach out to me for some help. It can be a great tool to help groups in their planning, not just for the Landcare Grants but for all potential projects.

Finally, National Volunteer Week is May 20 to 26 this year, with the theme Something for Everyone. National Volunteer Week recognises the diverse passions and talents everyone brings to the act of volunteering. It's an invitation to explore the myriad of opportunities available, emphasising there's a place for everyone in the world of volunteering. We will showcase the breadth of work in environmental volunteering throughout our region. There will be an opportunity to come together to celebrate and



recognise the amazing volunteers across Landcare, WaterWatch, Citizen Science and other environmental volunteering groups.

We would like to say a huge thank you to all volunteers across the North Central CMA. If you want to get involved, please reach out.

Happy reading,

Belinda Pritchard

Regional Landcare Coordinator  
North Central CMA

Phone: 03 5448 7124 or 0408 342 593

Email: [Belinda.pritchard@nccma.vic.gov.au](mailto:Belinda.pritchard@nccma.vic.gov.au)

Subscribe online to the North Central Chat using this QR code



Connecting rivers, landscapes, people

The North Central Catchment Management Authority (CMA) acknowledges Traditional Owners and Aboriginal and Torres Strait Islander peoples within the region, their rich cultures, spiritual connection to Country.

[www.nccma.vic.gov.au](http://www.nccma.vic.gov.au)



## News...

### Buloke and Northern Grampians Landcare Network Hall of Fame

The Buloke and Northern Grampians Landcare Network have inducted 10 individuals and two families into their newly established Hall of Fame.



The Hall of Fame inductees. Photo: Buloke and Northern Grampians Landcare Network

It was a special day for the Network on April 7, when Landcare members gathered to celebrate and recognise the contribution of many volunteers over nearly 40 years. Many of the inductees were there at the very start of the Landcare movement, at Winjallok in 1986. Sadly, some of them have since passed. The day was a great opportunity to celebrate their achievements and ensure their legacies are remembered for generations to come.

The inaugural Hall of Farm inductees were:

- **The Falla family** (Ron and David Falla, both deceased) – Ron began first with Field Naturalists then Landcare, and was known for his skill in plant identification. David was a founding member of Landcare and was passionate about protecting rare plants species, always volunteering at planting days.
- **Rob Youl OAM** – with a background in forestry and working in revegetation, urban ecology and farm forestry, Rob was active in the community promoting indigenous species and ecosystem restoration. Rob was Landcare Australia Ltd's project officer from 1996 to 2007, supporting groups and networks source funding. With a long history in Landcare, Rob has spoken widely and written or edited several books and articles.
- **The Proctor family** has been involved in Landcare since its inception and been actively involved in local Landcare committees. The Proctor's property is testament to the ability to combine profitable mixed farming enterprises with consideration towards environmental aspects.
- **Anne Hughes** is a passionate and fierce advocate for the protection and preservation of the natural environment. She is very knowledgeable about plants and animals in the local area and generously shares this knowledge with others.
- **Elizabeth Russell** was a founding member of Landcare and is passionate about the landscape and working hand in hand with agriculture. The Russell family fenced and revegetated many kilometres of the Richardson River and started a native nursery.
- **Lindsay Ezard** was involved at the beginning of Landcare at Winjallok in 1986 and has been an active member ever since. He has worked with the various departments (now DEECA) and is a skilled native seed collector.
- **Kevin Spence** was an instigator of many projects and activities across the Network area and was the Landcare Facilitator for the Network from its inception until 2020. He is highly regarded for his contribution to the environment throughout the region.
- **Mervyn John** (dec) began his environmental work as an engineers with the (now) Buloke Shire. He as passionate about ensuring trees were planted wherever possible on public land throughout the Wycheproof area. He was the instigator of many plantations thriving today and has left a visible legacy.
- **Elvie McDonald** (dec) was a passionate and determined advocate for the natural environment. She developed excellent skills as a naturalist and illustrator of local plants and inspired others to become involved in conservation work. She advocated for the protection of uncommon species and areas of special floral significance. Elvie also had several roles over many years in the St Arnaud Field Naturalists Club.
- **John Douglas** (dec) was a member of the Stuart Mill Landcare Group and dedicated his life to sharing his knowledge of the flora and fauna of the area. He was passionate about sustainable land use. John owned several parcels of land containing remnant vegetation, with his favourite block near Dalyenong granted to Bush Heritage on his passing.

- **Carrie Jesse** (dec) was one of Landcare's most active and passionate members. A young school teacher from Melbourne, Carrie married a local farmer and was there on the hill at Winjallock the day Landcare began. She was a staunch advocate for Walkers Lake and heavily involved in major projects to enhance the environment around the lake.
- **Terry Simpson** (dec) with his son Greg, ran a merino property at Winjallock and was determined to combat erosion on the treeless property and improve its profitability and sustainability. It was on Terry's property at Winjallock that Landcare was officially launched in 1986 by Joan Kirner. As a board member of the North Central CMA Terry continued to be a strong advocate for Landcare and the need for it to continue to be relevant for farmers.

There were four new annual Landcare awards presented, named in honour of four Hall of Fame inductees. These awards were voted on by the Members and Member Groups of the Network.

- **The Elvie McDonald Landcare Award for Biodiversity** was presented to Friends of Blue Gum Rise
- **The John Douglas Landcare Award for Land Management** was presented to Luke Batters
- **The Carrie Jesse Landcare Award for Community and Advocacy** was presented to Marney Durie
- **The Terry Simpson Landcare Group Award** was presented to Wycheproof and District Landcare Group.

Congratulations to all inductees and inaugural Award winners.



## National Reconciliation Week 27 May to 3 June

### Now More Than Ever #NRW2024

*The below extract has been taken from the Reconciliation Australia website.*

National Reconciliation Week (NRW) is a time for all Australians to learn about our shared histories, cultures, and achievements, and to explore how each of us can contribute to achieving reconciliation in Australia. The theme for NRW this year is **Now More Than Ever** and is a reminder to all of us that no matter what, the fight for justice and the rights of Aboriginal and Torres Strait Islander people will, and must, continue.

There have been many moments in Australia's reconciliation journey that make us want to turn away. But when things are divisive, the worst thing we can do is disengage or disconnect.

Now more than ever, we need to tackle the unfinished business of reconciliation. Reconciliation supporters must stand up to defend and uphold the rights of First Nations peoples. To call out racism wherever we encounter it and to actively reinforce the voices of Aboriginal and Torres Strait Islander peoples across this continent.

Now more than ever, the work continues. In treaty making, in truth-telling, in understanding our history, in education, in tackling racism. We need connection. We need respect. We need action. And we need change.

Now more than ever, we need reconciliation.

For more information head to [Reconciliation Australia's website](https://www.reconciliation.org.au).

## The North Central CMA is proud to help raise funds for Children's Ground.

Children's Ground is a First Nations organisation, with a First Nations approach creating change for future generations.

The North Central CMA recognises our shared history and celebrates First Nations culture, knowledge, and connection to land, waterways, and biodiversity. We acknowledge First Nations Peoples continuous connection to culture and aim to promote and build stronger connections to Country through employment, training, education and recognition.



We are committed to walking and working together on Country with First Nations Peoples and organisations as equals to promote healthy Country to enable our whole community to prosper.

If you would like to support this initiative, please head to the Children's Ground website.

[North Central CMA • Fundraise for Children's Ground \(childrensground.org.au\)](https://childrensground.org.au)



## World bee day 20 May

This World Bee Day, celebrate bees and their vital role in global food systems with an event in your community.

There are lots of ways to show your support for these important pollinators. Host a Great Bee Morning Tea (see more below), take part in a community gardening session or webinar on Bee Friendly Farming, wear yellow to your local farmers' market or simply talk to your friends and family about the importance of bees.

World Bee Day is on Monday 20 May 2024. You can list your events for free at the [World Bee Day Australia website](https://www.worldbeedayaustralia.com.au).



## Protecting valuable paddock trees when burning stubble

Landholders are being urged to take the necessary steps to protect paddock trees when burning stubble on their properties.

Fire restrictions are currently in place with a Fire Danger Period declared by the Country Fire Authority (CFA) until the start of May.

This means a permit is required to burn grass, stubble, and other vegetation on your property until the Fire Danger Period ends.

Department of Energy, Environment and Climate Action (DEECA) Regional Manager Natural Environment Programs, Jane Roots said native paddock trees have significant biodiversity benefits and are protected by law.

Good planning and management before burning on your property is important and will help avoid impacts, ensuring these valuable trees are protected in the long term.

There are a few actions you can take to protect paddock trees: slash around the tree to establish an adequate fire break and wet the area around the tree before beginning your burn.

It is also important to ensure you have adequate water and the right equipment on hand to extinguish the fire before starting a burn.

DEECA Hume Regional Manager Natural Environment Programs, Jane Roots said it is important to protect native paddock trees.

'They provide shade to stock, reduce wind impacts to crops, store carbon, and provide habitat to important pollinators and birds that feed on pests.

'We encourage landholders to be well prepared before beginning a stubble burn.

'Creating firebreaks around trees and having water and equipment ready to extinguish the fire will ensure you can protect your valued native trees.'

Find out more [here](#).

Please ensure you follow all CFA guidelines which outline what you can and can't do during a declared Fire Danger Period.

Find more information [click here](#).

Anyone wanting to report concerns about stubble burning and the destruction of any paddock trees should contact their local council.



their knowledge on how people can build biosecurity into their day-to-day farming practices.'

In episode one, Erica Smith from Glenstrae Highlands talks about how she went about introducing some basic biosecurity practices when setting up her property in Gippsland.

In episode two, Brett Davidson from Agriculture Victoria and Rachael Laukart from RSPCA Victoria cover how both agencies are helping producers manage risk and improve their biosecurity practices.

'Listeners will receive advice on what to include in a biosecurity plan, the importance of Property Identification Codes (PICs) and where to go for tips and advice about biosecurity practices and steps you can take on farm,' Ms Harris said.

You can subscribe and listen to Biosecurity Basics on AgVic Talk wherever you get your podcasts:

Follow AgVic Talk on [Spotify](#)

Follow AgVic Talk on [Apple Podcasts](#)

You can find out more and listen to other AgVic Talk episodes at [agriculture.vic.gov.au/agvictalk](http://agriculture.vic.gov.au/agvictalk)

To find out more about Agriculture Victoria's work on managing biosecurity in Victoria, visit our [website](#).

## Biosecurity basics covered in new podcast season of Ag Vic Talk

### We all play a role in keeping Victoria safe from biosecurity risks.

To help all Victorians play their role, Agriculture Victoria's new podcast season Biosecurity Basics takes a deep dive into the fundamentals of biosecurity, including practical things listeners can put in place to play their part in protecting our animals and environment.

Program Manager Emergency Animal Disease Industry Engagement, Kellyanne Harris, said listeners will hear from people engaged in biosecurity.

'It doesn't matter how many animals you have, how big or small your property is, biosecurity is everyone's business,' Ms Harris said.

'Every livestock owner or person living on a small or lifestyle farm can make changes today to improve their biosecurity and help protect their property from pests and diseases.

'Created in collaboration with RSPCA Victoria, the new AgVic Talk series features experts from RSPCA Victoria and Agriculture Victoria as well as farmers who share



## Exploring natural capital: opportunities for farmers in the North Central CMA region

### Natural capital and its significance in emerging markets is a hot topic at the moment. What is Natural Capital? What does it mean for my farm businesses? What are the opportunities and what are the risks?

That's why the North Central CMA is hosting a Natural Capital Forum on Thursday, 13 June in Bendigo. The forum is an opportunity for farmers, land managers, and experts to explore the emerging opportunities of Natural

Capital and understand its role in agriculture and land management in the future.

Keynote topics and speakers include:

- **ESG Insights: From Global Trends to On-Farm Practices** - Katie McRobert, General Manager / Acting CEO, Australian Farm Institute
- **Farm-scale Natural Capital Accounting** - Jim Radford, Associate Professor, Department of Environment and Genetics, School of Agriculture, Biomedicine and Environment, La Trobe University.
- **Enhancing farm profitability, resilience and sustainability** - Angela Hawdon, Strategic Engagements Manager, Farming for the Future
- **Understanding On-Farm Emissions** - Alison Kelly, Farm Emissions Specialist | Agriculture Victoria

Key focus areas on the program include:

- Insights into natural assets – explore the wealth of natural assets, including soil, air, water, and biodiversity, and understand how these assets offer benefits for the future.
- Exploring Environmental Market Opportunities - how your natural resources can create opportunities through environmental markets. Learn not only about the opportunities but also the risks, and key considerations before entering the market.
- Farmers Insights – Hear from farmers who have engaged with natural capital and carbon markets. They will share their experiences, challenges, opportunities, and innovative approaches for harnessing the potential of natural capital for long-term agricultural resilience and success.

In addition to gaining valuable insights and knowledge, the Natural Capital Forum will provide ample networking opportunities. Connect with industry leaders, professionals, and organisations actively contributing to the natural capital space.

Tickets are only \$25, more information and tickets available at [www.nccma.vic.gov.au/media-events/events](http://www.nccma.vic.gov.au/media-events/events)

For more information please email [info@nccma.vic.gov.au](mailto:info@nccma.vic.gov.au) or call (03) 5440 1850

Or use this QR code to find the forum page on North Central CMA website.



### More support for communities to tackle pests

The Victorian Government is empowering local community groups to help protect their farms, local environment, and the community from the threat of weeds and pests.

Minister for Agriculture Ros Spence recently awarded \$500,000 of grants to 16 Victorian organisations as part of the Partnership Against Pests Program – which delivers industry and community-led actions that target weeds and pests in key agricultural areas.

Established weeds and pest animals damage our landscapes, impact agricultural production, are a risk to international market access and damage culturally sensitive sites.

They are estimated to cost Victorian farmers \$869 million every year in management and lost production costs.

Grants delivered through the Partnership Against Pests Program will ensure the people most affected by widely established invasive species are central to identifying problems, creating strategies and solutions that help limit their spread and reduce their impact.

Projects being funded will improve local knowledge, capability and encourage collective efforts to manage local established weeds and pests.

Buloke and Northern Grampians Landcare Network will use their grant to partner with a range of stakeholders to increase awareness about weeds and pests in the district. This includes engaging with year 9 students across four schools and mapping the extent of specific species using online tools. The group will develop management plans and deliver a series of educational community events and publications.

Connecting Country will run several field days alongside a seasonal communications campaign to build awareness of weeds and pest animals in the community.

This includes weed identification and control field days, a rabbit control field day, monthly articles and social media.

Bush Heritage will partner with Djandak to deliver on Country field days for the public and Dja Dja Wurrung peoples to share the story of wheel cactus control and country healing at Buckrabanyule. The project will produce a video focussed on sharing knowledge and designed to attract future investment in wheel cactus control in the region.

Click here for more information about the [Partnership Against Pests Grants Program](#), including a full list of Round Two grant recipients.

### Stories to action video competition extended

The Bendigo Sustainability Group along with the City of Greater Bendigo and other partners has launched a Stories to Action environmental video competition.

This free competition supports young people (11-29yo) to make inspiring short videos about the bold creative actions we need to help create a more sustainable world.

It includes \$1000+ worth of prizes and opportunities through April and May to get connected to other people and organisations making a difference.

Submissions close 27 May

More info can be found here: <https://storiestoaction.org>

### What if we can't find a secretary?

#### An extract from the Forever Agenda Blog

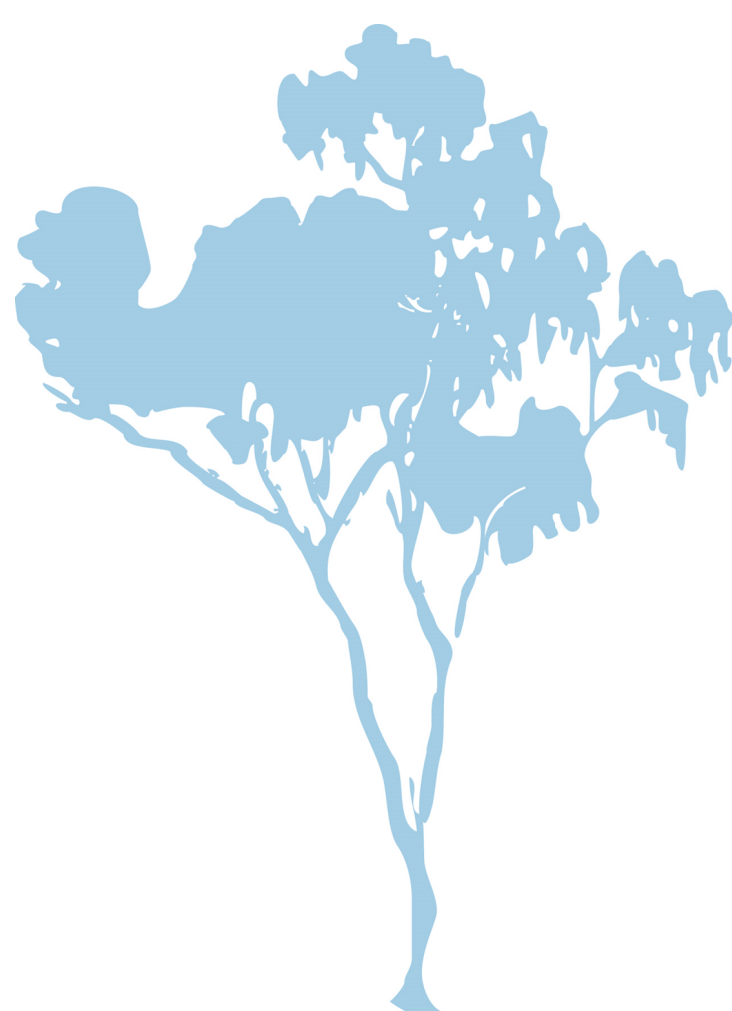
In the world of grassroots community volunteer organisations, finding individuals willing to take on key roles can be a challenge.

Recently I received a question from a small club that faced a common predicament when they couldn't find a secretary at their annual general meeting (AGM).

In a world where volunteering is on the decline (that's right, the challenge you feel is real - we have not returned to pre-covid levels of volunteering) and it's getting tougher to fill committee roles, this scenario raises questions about the legal requirements and options available to organisations in similar situations.

How might we adapt to this new world and what creative ideas can we implement?

To read this article in full, [head over to the Forever Agenda Blog post here.](#)





# WaterWatch Victoria



WaterWatch volunteers testing QAQC waterwatch samples

Water quality data collected by WaterWatch volunteers across the state is trusted and used by agencies, such as the EPA, Catchment Management Authorities and local councils. To ensure ongoing confidence in the accuracy of the data, WaterWatch Victoria holds an annual Quality Assurance Quality Control (QAQC) program.

Two events were recently held in the north central region, where volunteers and WaterWatch staff tested pre-prepared water samples with known values, to ensure our equipment and methods were up to scratch.

As a bonus, we had Professor Kirsten Parris come along and give a great presentation on frogs of the region, a prelude to a new frog monitoring program we hope to launch later this year.

Thanks to those who were able to make it along to either the Malmsbury or Strathdale event, and to those who participated at home.

Turbidity proved a little problematic (an issue with the samples, not our turbidity tubes), and a few meters needed replacing, but otherwise our methods were consistent and our results accurate. Statewide QAQC results will be circulated soon.

## Frog Focus

### Frogs calling in Autumn

Each season, we will highlight some of the local frog species that are most likely to be calling during that time with a link for more information.

- Bibron's toadlet [Pseudophryne bibronii](#)
- Striped marsh frog [Limnodynastes peronii](#)
- Common froglet [Crinia signifera](#)
- Victorian smooth froglet [Geocrinia victoriana](#)

Britt Gregory  
Project Officer – WaterWatch & Citizen Science



## Let the learning begin

### River Detectives schools are diving into the program as term two begins

Seven workshops have been conducted online and face to face across the region inducting teachers to the 2024 program; everywhere from Kyneton to Swan Hill, Chewton to Bridgewater.



Staff at Mallee District Aboriginal Services are inducted to the River Detectives program.



I'm already hearing of some great initiatives at River Detectives schools where they are making the program their own and using it as a vehicle to achieve specific outcomes.

Daylesford Dharma School is planning a Kids Teaching Kids event at Cornish Hill where they will run activities for their peers from several surrounding schools to learn about the environment there.

I will be supporting students beforehand to become 'experts' in waterbug sampling so they can be the teachers on the day in May.

St Kilian's Primary School Bendigo has a group of grade six students called FIRE carriers (Friends igniting reconciliation through education) involved in the River Detectives program to engage in hands-on tasks to caring for Bendigo Creek.

They have seized an opportunity to travel to Huntly for revegetation with Northern Bendigo Landcare in early May.

This will coincide with a visit from the participants of Unplug and Play on their kayaking adventure down Bendigo Creek who will learn from the students about riparian rehabilitation and learn how to plant native species.

Students at Chewton Primary School regularly test the water quality of their adopted site on Forest Creek and after learning about the impact of phosphorus, were quite alarmed at the amount of dog poo they were noticing beside the walking track.

Off their own bat, they set about taking action. They designed and made these Dog Poop Protest badges, have designed signage and have met with Parks Victoria staff about producing the signs for installation along the path.

**Ask The Expert webinar Dull Dams to Dynamic Dwellings**

Twice a year we invite River Detectives students to submit questions to be posed to an expert on a waterway/catchment health-related topic.

A recorded webinar is then available for on-demand viewing on the [River Detectives website](#).

We are very excited to have Professor David Lindenmayer joining us for our first webinar of 2024.

Professor David Lindenmayer is a world-leading expert in forest ecology and resource management, conservation science, and biodiversity conservation.

He currently runs five large-scale, long-term research programs in south-eastern Australia, primarily associated with developing ways to conserve biodiversity in

farmland, wood production forests, plantations, and reserves.

Many River Detectives students will have dams on their properties and quite a few schools are lucky to have water bodies in their grounds.

This will be an uplifting and very practical session about how these dams can be taken from dull to dynamic and fill dual roles as watering points, recreational assets, water storage *and* habitat havens for frogs, fish, and waterbirds.



From dull



To dynamic

We hope to make the recording publicly available as we know the topic will be of interest to many Chat readers.



Nicole Howie  
 River Detectives Project Officer  
 North Central CMA  
 Phone: 0413 974 074  
 Email: [nicole.howie@nccma.vic.gov.au](mailto:nicole.howie@nccma.vic.gov.au)

**Water Storages Update**

Region	Water Storage	% full 24 April 2024	% full same time 2023
Murray Storages	Dartmouth Dam	94.4	95.89
	Hume Dam	62.58	91.24
	Reedy/Middle Lk	95.44	93.89
	Kangaroo Lake	90.04	95.42
	Ghow Swamp	83.64	80.93
	Lake Boga	79.33	84.18
	Lake Charm	95.32	91.42
Loddon Storages	Cairn Curran Res	73.51	85.30
	Tullaroop Res	85.47	83.99
	Laanecoorie Res	37.50	46.19
Bullarook Storages	Newlyn Res	58.12	67.42
	Hepburns Lagoon	47.00	66.98
Goulburn Storages	Lake Eildon	91.54	93.83
	Waranga Basin	56.05	59.28
Campaspe	Lake Eppalock	92.90	91.24
Coliban Water Storages	Upper Coliban Res	87.8	89.9
	Lauriston Res	91.5	89.3
	Malmsbury Res	45.3	43.4

Sources:  
[Storage Levels - Goulburn Murray Water \(g-mwater.com.au\)](http://g-mwater.com.au)

[Water Information Dashboard: Water Information: Bureau of Meteorology \(bom.gov.au\)](http://bom.gov.au)

**Upcoming Events and Special Days**

May	
<a href="#">International Composting Awareness Week</a>	May 5-11
<a href="#">World Migratory Bird Day</a>	May 11
<a href="#">National Volunteer Week</a>	May 20-26
<a href="#">World Bee Day</a>	May 20
<a href="#">International Day for Biological Diversity</a>	May 22
<a href="#">World Turtle Day</a>	May 23
June	
<a href="#">World Environment Day</a>	June 5
<a href="#">International Day for the Fight against Illegal, Unreported and Unregulated Fishing</a>	June 5
<a href="#">World Oceans Day</a>	June 8
<a href="#">Sustainable Gastronomy Day</a>	June 18
July	
<a href="#">Plastic Free July</a>	July 1-31
<a href="#">World Zoonoses Day</a>	July 6
<a href="#">World Mangrove Day</a>	July 26
<a href="#">Schools Tree Day</a>	July 29
<a href="#">National Tree Day</a>	July 31

## Courses & Resources...

### Understanding income tax reporting changes

**The Australian Taxation Office (ATO) has introduced changes that may make environmental groups liable to pay income tax this year.**

We know tax is not everyone's cup of tea, but recent changes by the ATO mean all Landcare organisations should re-evaluate their tax-exempt status. It may be necessary to take action to ensure your group is not required to start paying tax from the 2023/24 financial year onward.

Landcare groups may have previously thought they were exempt from paying income tax because they operate as a not-for profit (NFP). **However, not all NFP organisations are tax-exempt.**

To learn more about how these changes might impact your group/network – and what to do about it – join us at this webinar presented in collaboration with the Australian Charities and Not-for-profits Commission (ACNC).

**When:** Thursday, 2 May 2024, 5.30pm to 7pm

**Where:** Online via Zoom

**Cost:** Free

**RSVP:** [Register via Humanitix](#)

### Climate outlook and soil moisture update for autumn in Victoria

**Recording: Victoria's seasonal climate outlook and soil moisture update for autumn**

Presented by Agriculture Victoria's Dale Grey and Dale Boyd.

In this webinar recording, Seasonal Risk Agronomist Dale Grey provides an update on Victoria's climate outlook for autumn. Dale focuses on the current seasonal climate outlook and climate driver activity.

Dale Boyd provides a seasonal update of the cropping and soil moisture conditions as measured by the Agriculture Victoria moisture probe network.

View the recording [here](#)

**Duration:** 63 minutes (including questions)

**Password:** Climate

This webinar was originally presented on Wednesday 17 April, 2024.

### After the flood: stories of farmer recovery and resilience podcast season

**The full season is available now.**

Agriculture Victoria's podcast season *After the flood: stories of farmer recovery and resilience* explores the recovery required after a natural disaster, the support provided and the resilience of Victorian farmers, including how different industries are recovering.

All episodes are now available on the [Agriculture Victoria website](#).

The season has been produced by Agriculture Victoria in partnership with the National Centre for Farmer Health #BuildingFarmSpirit program.

### Victorian Drought Resilience Adoption and Innovation Hub

The Vic Hub represents a comprehensive approach to enhancing economic, environmental, and social resilience to drought in order to create innovative and profitable sectors, sustainable and functioning landscapes, and resourceful and adaptable communities.

The Victorian hub is led by the University of Melbourne's Dookie Campus in association with Deakin University, La Trobe University, Federation University, and Agriculture Victoria.

The hub is further supported by five regional nodes across Victoria: Birchip Cropping Group, Riverine Plains, Food & Fibre Gippsland, Southern Farming Systems and Mallee Regional Innovation Centre.

To keep up-to-date with the latest projects, scholarships and grants, and events subscribe to the [Vic Hub newsletter](#).

Farmers can use the [Drought Resilience Self-Assessment Tool](#) (DR.SAT) to further assess their farm business resilience.

The tool includes climate projections and farm business resilience resources to support farmers strengthen their farm business.

## Events...



### Carbon farming and native plantings information session

Join Greening Australia and Loddon Plains Landcare Network to hear how funding sources can help you access free native plantings for your property and create sustainable farm outcomes.

Hear from experts with more than 15 years' experience working with Victorian landholders on planting projects, and with over a decade of experience in carbon projects.

Learn more about carbon farming opportunities in the North Central Catchment from Greening Australia and **Canopy** representatives.

Find out how Greening Australia can help landholders access and combine numerous funding streams to maximise opportunities for their properties.

Your questions answered:

- How integrated native plantings can help your land and your operations, at no cost to you
- Diversifying on-farm income with carbon credits
- Supporting production outcomes
- Improving biodiversity and creating habitat for native wildlife
- What support we can provide with project delivery and ongoing monitoring and maintenance

**When:** Wednesday 1 May, 1pm to 3pm

**Where:** Inglewood

**Cost:** Free

**RSVP** [essential via Eventbrite](#)



### Victorian Landcare Forum

Landcare Victoria presents the 2024 Victoria Landcare Forum on 9 and 10 May at the Bendigo Exhibition Centre. This year's forum focuses on Growing Landcare and will cover a range of topics around this theme. The forum offers a day of presentations and peer-to-peer learning as well as a bus tour to local Landcare sites and a networking dinner.

The 2024 Victorian Landcare Forum provides an engagement opportunity for the Landcare community to promote best practice and share stories, and to grow Landcare across the state.

**When:** Thursday 9 May and Friday 10 May

**Where:** Bendigo Exhibition Centre

**Cost:** \$40-\$205

**Tickets** available [from Humanitix](#).

### SWIFFT Seminar: Unfolding trends in conservation

This seminar will explore new and emerging strategies across Government, NGOs and the environmental education sector aimed at conserving biodiversity and threatened species.

**Preliminary speakers:**

**Unfolding trends in conservation - the intersection between science, policy, and environmental management**

*Professor Sarah Bekessy, RMIT University*

**Emerging trends in threatened species management and the Threatened Species Action Plan**

*Dr Fiona Fraser, Threatened Species Commissioner - Australian Government, Department of Climate Change, Energy, the Environment and Water*

**Emerging trends in biodiversity conservation across private land and the Australian Land Conservation Alliance**

*Dr Jody Gunn, CEO, Australian Land Conservation Alliance (ALCA)*

**Emerging trends in environmental education and STEM careers**

*To be advised*

**When:** Thursday 23 May 10 am to 12.30pm

**Where:** online

**Register here.**



**National Volunteer Week breakfast for environmental volunteers**

North Central CMA and City of Greater Bendigo are partnering to offer a special thank you breakfast for environmental volunteers. These include Landcare, WaterWatch, Citizen Science, sustainability groups, Field Naturalists, and other volunteers in environmental groups.

**When:** Friday 24 May

**Where:** Old Church on the Hill, Bendigo

**Cost:** Free

**RSVP** required via [Eventbrite](#)

Loddon Plains Landcare Network

**"COMBATING INVASIVE WEEDS"**  
A COMMUNITY ACTION FORUM FOR EFFECTIVE WEED CONTROL

- **Monday 13th MAY , 10am-4pm**  
Revised Day !
- **LPLN office**  
**28 Station street Inglewood**
- **BBQ lunch provided**

**Speakers**  
**Dr John Morgan,**  
La Trobe Melbourne.  
Challenges of restoration, species invasion, and environmental change.

**Lee Mead,**  
President, Tarrangower cactus control group Inc.

**Don't miss this chance to contribute to the solution.**

Goal

The primary objective of this event is to concentrate on weed management, aiming to address the widespread presence and negative effects of invasive species within the Loddon Shire.

**To book your place aim your camera phone at the below Qr code**

AGRICULTURE VICTORIA



**Central Victorian Indigenous Film Festival**

North Central CMA is proudly participating in the Central Victorian Indigenous Film Festival 2024. The free screening of *Sweet Country* will follow a Welcome to Country by Djaara Elder, Jason Kerr.

*Sweet Country* is based on a series of true events set in 1920s Northern Territory, an Aboriginal farmhand kills a white man in self-defence, then flees into the Outback, where he is pursued by a determined lawman.

*Sweet Country* is rated **MA15+** and may cause discomfort to First Nation Peoples. Viewers discretion advised.

**When:** Sunday 2 June 4pm to 6.30pm

**Where:** La Trobe Art Institute, 121 View Street Bendigo

**RSVP:** [Register via Eventbrite.](#)

## Save the date: Farm biosecurity workshop

Hosted by the Mid-Loddon Sub-Catchment Management Group, this information and discussion session will include speakers from Agriculture Victoria on animal health, biosecurity, weed and pest management.

**When:** Tuesday 18 June

**Where:** Laanecoorie Hall

**Cost:** Free

**RSVP** required, further details soon.

## Funding opportunities...

### Australian Communities Foundation

Hamer Sprout Fund

[Apply for Funding — The Hamer Sprout Fund](#)

**Closes** 30/09/2024

**Eligible** for unincorporated groups, individuals and not-for-profits

**Funding** (max) \$10,000. Total pool: \$25,000

### Community Enterprise Foundation

Community Bank Inglewood & District Grants Program VIC

[Grant - Foundation](#)

[communityenterprisefoundation.com.au](http://communityenterprisefoundation.com.au)

**Closes** 31/12/2024

**Eligible** for TAFEs, state and territory governments, schools, unincorporated groups, universities, not-for-profits and local governments.

### Agriculture Victoria, LaunchVic

AgTech Grants Program

[Grants - LaunchVic](#)

**Closes** 30/06/2024

**Eligible** for businesses, individuals, and not-for-profits.

**Funding** (max) \$50,000.

### Department of Energy, Environment and Climate Action (VIC)

Bushfire Recovery Planning and Building Assistance Rebate Scheme

[Planning and building assistance rebate scheme](#)

[water.vic.gov.au](http://water.vic.gov.au)

**Closes** 31/05/2025

**Eligible** to individuals  
**Funding** (max) \$5,000.

### Qantas

Qantas Regional Grants

[Qantas Regional Grants | Qantas](#)

**Closes** 10/05/2024

**Eligible** for unincorporated groups and not-for-profits  
Total pool **funding** of \$1,000,000.

### The Ian Potter Foundation

Sustainable - Environment Funding

[Environment | The Ian Potter Foundation](#)

**Closes** 06/06/2024

**Eligible** for unincorporated groups, universities, and not-for-profits

DGR Status is required

**Funding** from \$100,000

