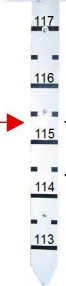


**Campaspe River (Lower)
at Rochester
Town Gauge (060300)**

**FLOOD
GAUGE**

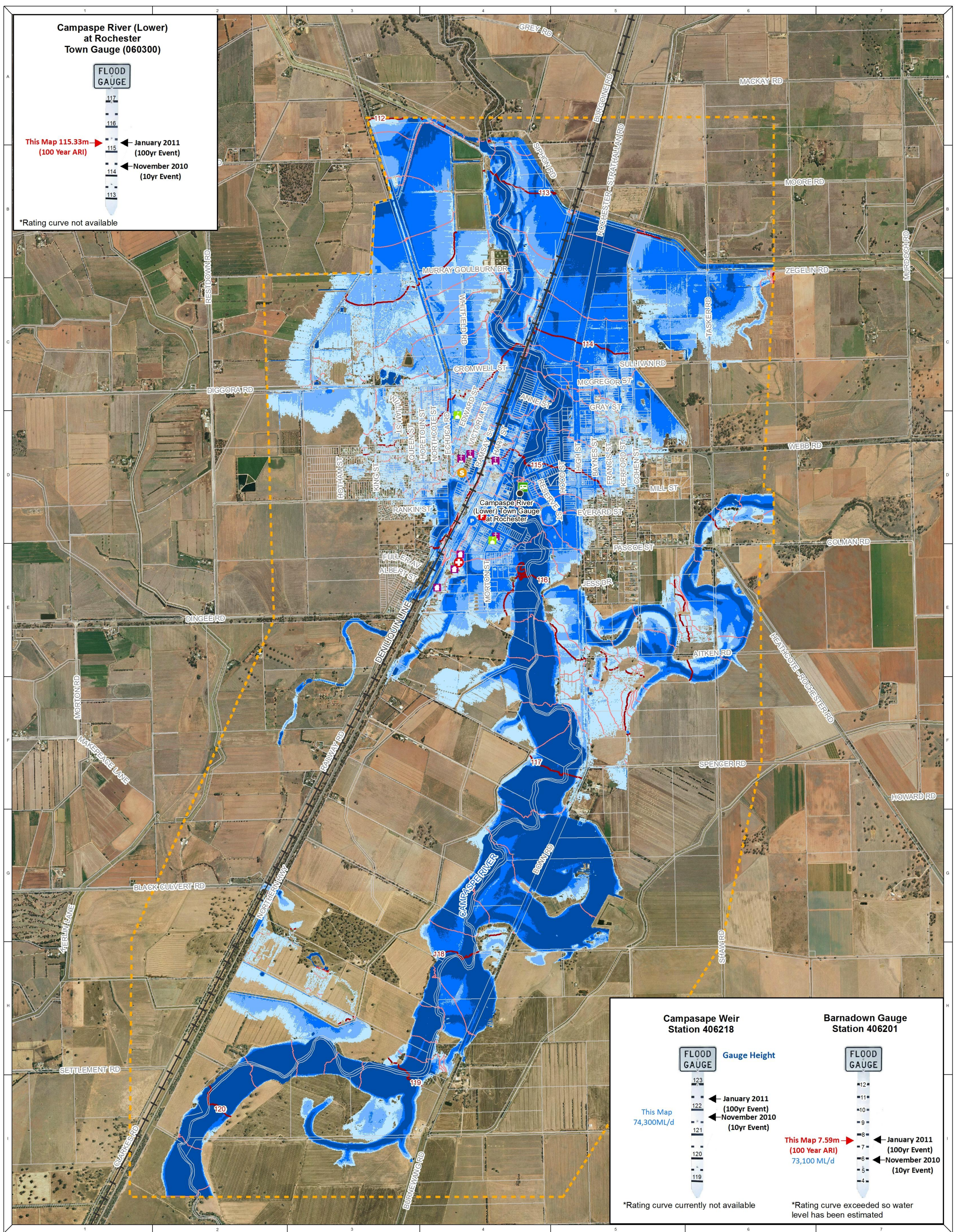


This Map 115.33m
(100 Year ARI)

January 2011
(100yr Event)

November 2010
(10yr Event)

*Rating curve not available

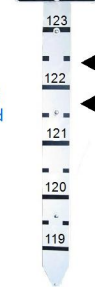


**Campaspe Weir
Station 406218**

**Barnadown Gauge
Station 406201**

**FLOOD
GAUGE**

Gauge Height



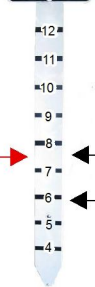
This Map
74,300ML/d

January 2011
(100yr Event)

November 2010
(10yr Event)

*Rating curve currently not available

**FLOOD
GAUGE**



This Map 7.59m
(100 Year ARI)
73,100 ML/d

January 2011
(100yr Event)

November 2010
(10yr Event)

*Rating curve exceeded so water level has been estimated

NOTE
Water Technology Pty. Ltd. has prepared this document in accordance with instruction of North Central Catchment Management Authority for their specific use.

DISCLAIMER
The North Central Catchment Management Authority and Water Technology Pty. Ltd. does not warrant that this document is definitive nor free from error and does not accept liability for any loss caused or arising from reliance upon information provided herein.



- Gauge
- Fire Station
- ⊕ Hospital
- Ⓢ SES Unit
- Ⓟ Police Station

- School
- Nursing Home
- Church
- Caravan Park

- Rail Line
- Cadastre
- Model Extent

- WSE Contours (m AHD)**
- 1m AHD Contours
 - 0.2m AHD Contours

- Flood Depth (m)**
- 0 - 0.25
 - 0.25 - 0.5
 - 0.5 - 1
 - Greater than 1m



1:30,000 at A3



Rochester Flood Study
100 Year ARI Flood Event
Campaspe River