

January Flood Event.



NORTH CENTRAL
Catchment Management Authority

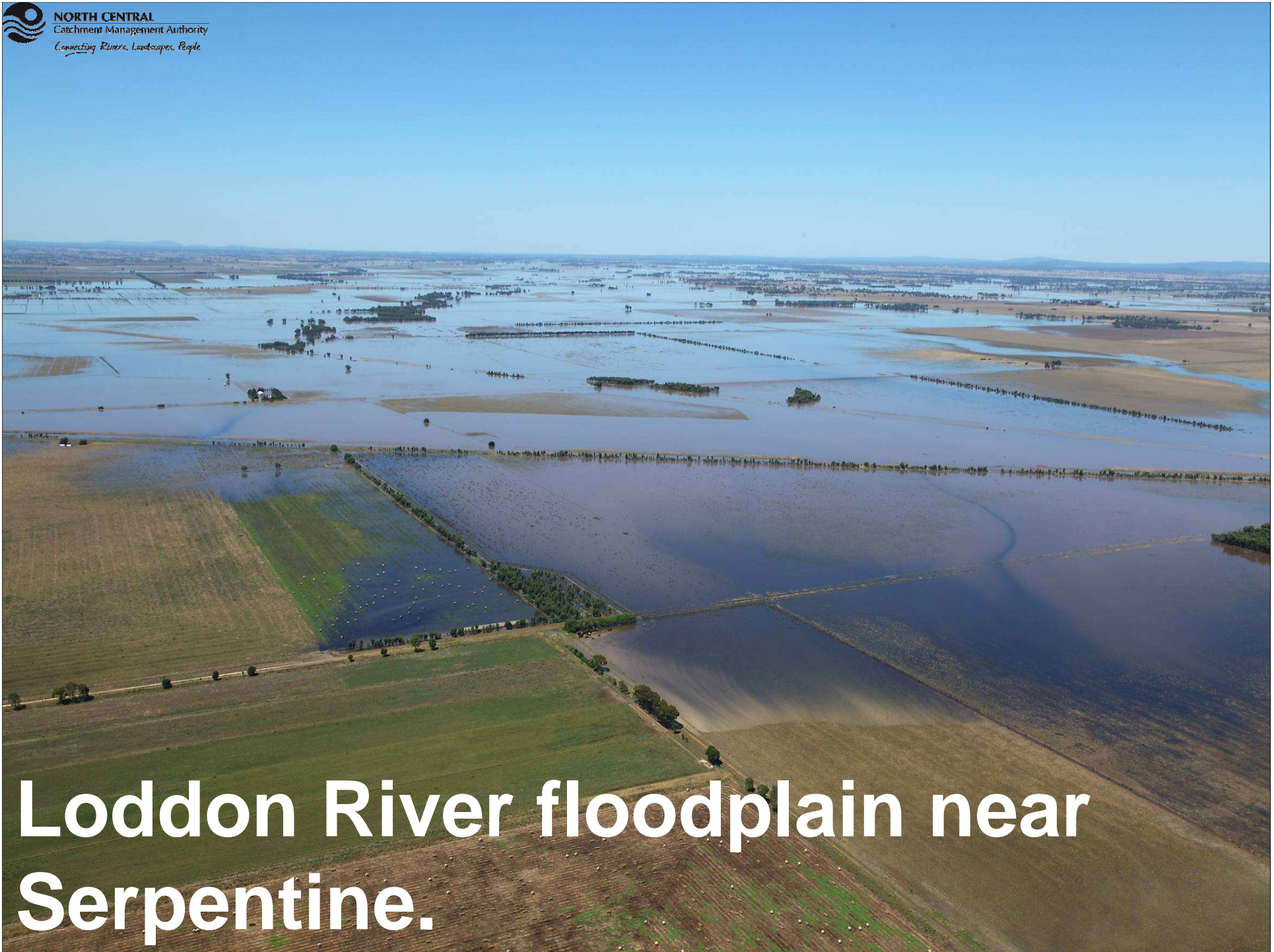
Connecting Rivers, Landscapes, People



Rochester.



Campaspe Weir.



Loddon River floodplain near Serpentine.



NORTH CENTRAL
Catchment Management Authority
Connecting Rivers, Landscapes, People



Loddon Weir.



Charlton.



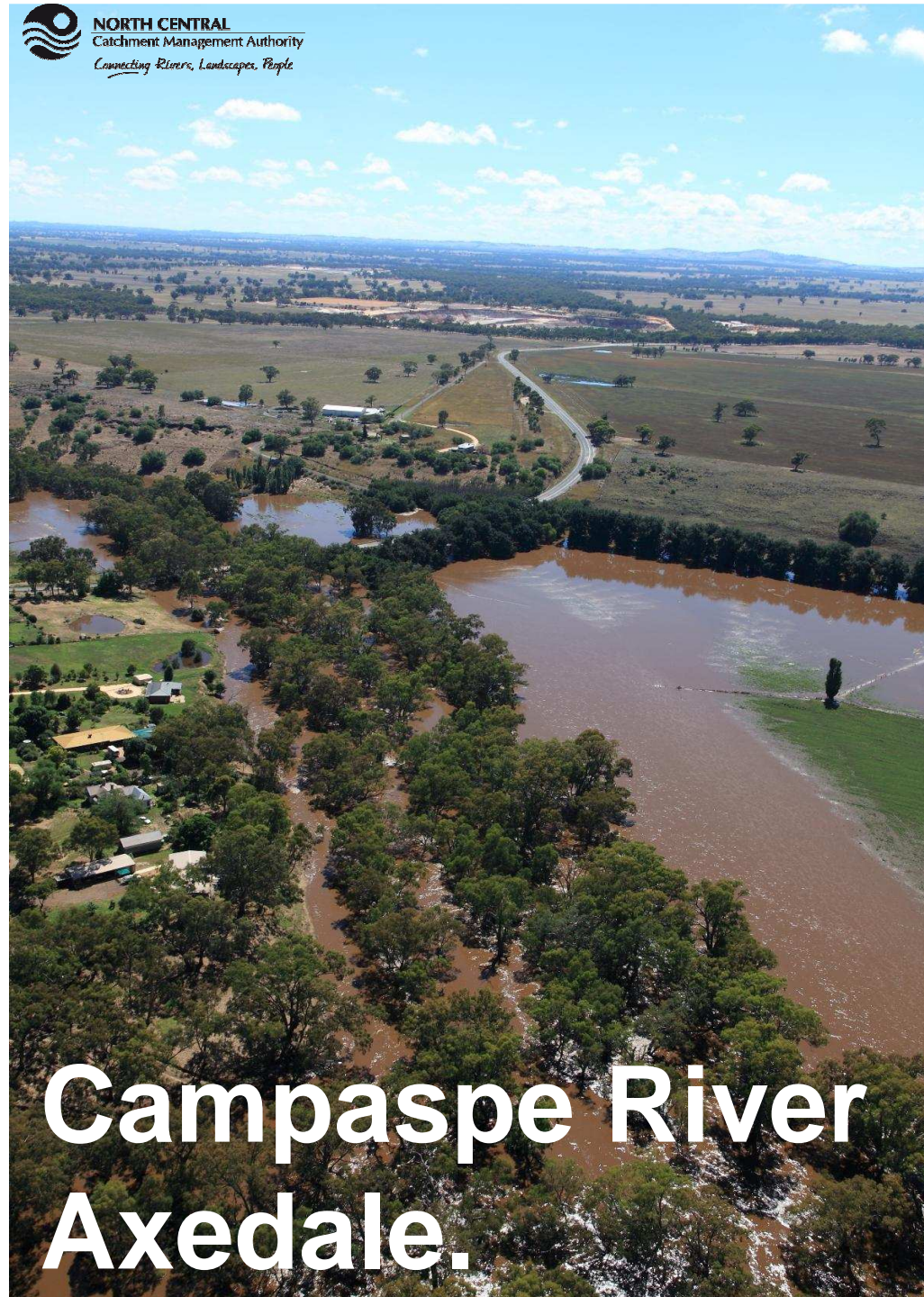
NORTH CENTRAL
Catchment Management Authority
Connecting Rivers, Landscapes, People



**Between Serpentine and Durham
Ox.**



Bridgewater.



Campaspe River Axedale.



Breached levee Lower Loddon River.



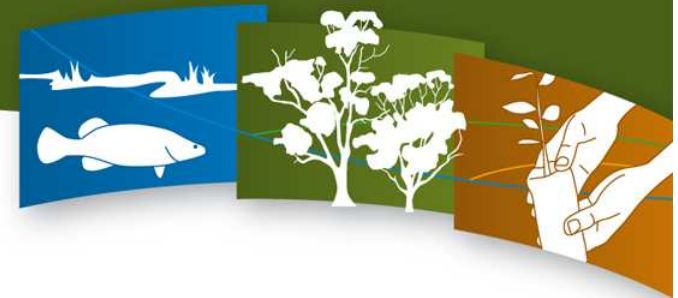
Pyramid Creek levee breach.



NORTH CENTRAL
Catchment Management Authority
Connecting Rivers, Landscapes, People



**Benjeroop.
Goulburn Murray Water Staff.**



The photos in this presentation are exclusive to North Central CMA.

If you would like a copy of any of the photos displayed in this presentation please email info@nccma.vic.gov.au with the following details:

- Your name.
- Organisation/Group name.
- Purpose of request.
- Name of photo requested.
- Photo size required (Hi-res or Low-res).
- Photo due date.



NORTH CENTRAL
Catchment Management Authority
Connecting Rivers, Landscapes, People