

The Creswick Flood Mitigation and Urban Drainage Plan Community feedback

The North Central CMA in conjunction with the Hepburn Shire Council and the local community is developing the Creswick Flood Mitigation and Urban Drainage Plan. This plan aims to provide the Creswick Township with greater protection from future flooding.

An important component in the development of the plan is to capture community knowledge regarding the recent flood events at Creswick.

A community meeting, attended by over 50 community members, was held on 10 March 2011 at the Creswick Town Hall. At this meeting community members were encouraged to document their experiences and highlight issues relating to the recent floods in Creswick, which included:

- *Recognition of the stress and hardship being experienced by the Creswick community*
- *Vegetation in the creek (bed and/or banks) and lack of maintenance*
- *Storm water drainage*
- *Debris in creek*
- *Capacity of major bridges through township*
- *Shallow depth of creek due to siltation and capacity of creek*
- *Ability of upstream dams to help reduce flooding impact*
- *Levee breaches, and*
- *Flood mapping*

Key areas within the township where flooding issues were identified:

- Albert Street and Bowling Club
- Cushing Avenue and Cambridge Street
- Nuggetty Gully
- Sawpit Gully
- Localised urban drainage issues (Harvey Street, Wright Court and Gardiner Street)

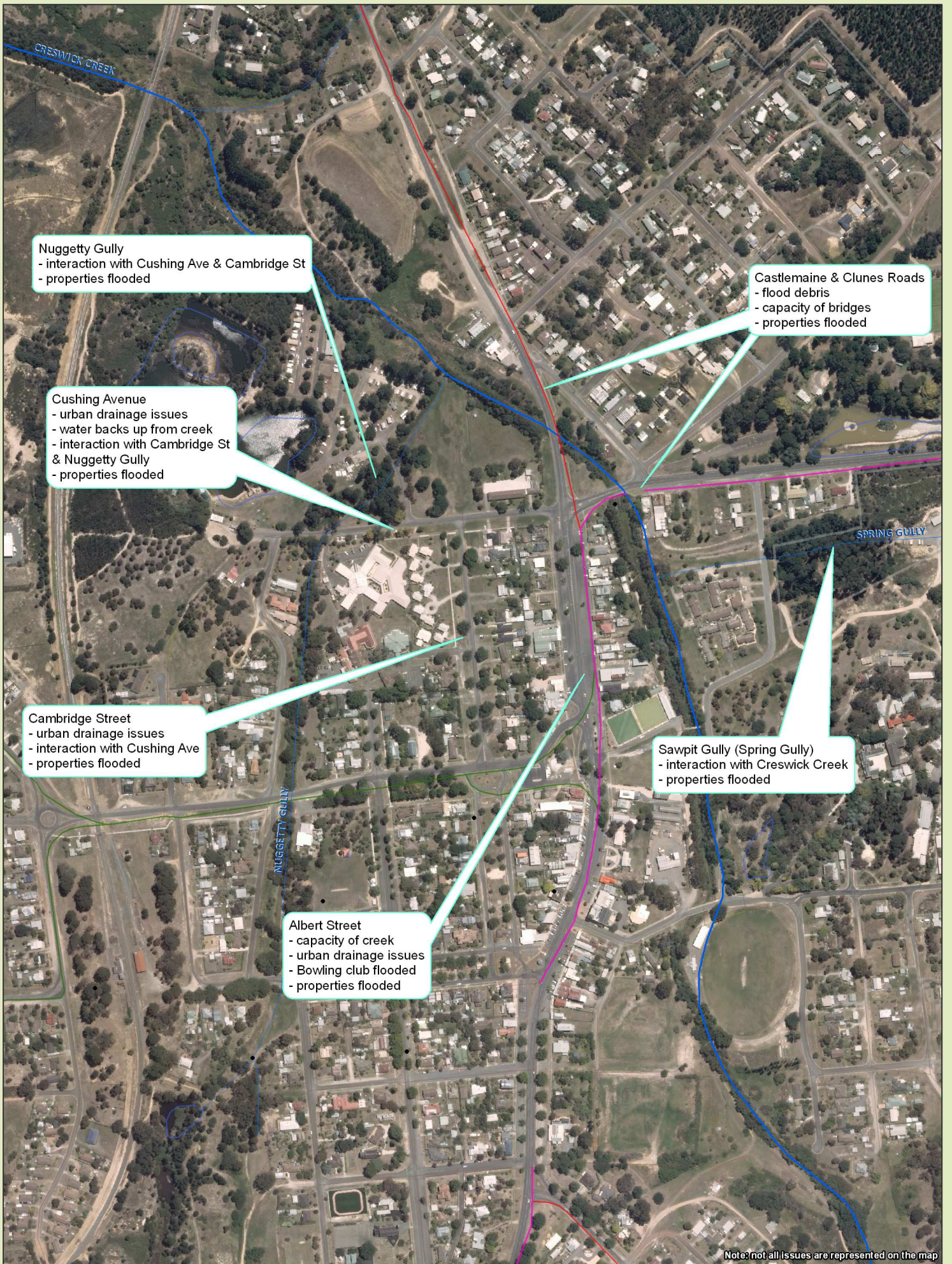
What will be done with this information?

This community information will be used to help understand the behaviour of flood water and storm water and identify key areas to focus on in developing the Creswick Flood Mitigation and Urban Drainage Plan.

As part of the plan's development, detailed flood modeling and analysis will determine the main causes of flooding and assess the effectiveness of works to reduce flooding into the future.

**Refer to Map overleaf for a summary of major issues identified at Community meeting (not exhaustive).*

If you have further information, contact Rohan Hogan of the North Central CMA on (03) 5448 7124.



Nuggetty Gully
 - interaction with Cushing Ave & Cambridge St
 - properties flooded

Castlemaine & Clunes Roads
 - flood debris
 - capacity of bridges
 - properties flooded

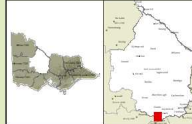
Cushing Avenue
 - urban drainage issues
 - water backs up from creek
 - interaction with Cambridge St & Nuggetty Gully
 - properties flooded

Cambridge Street
 - urban drainage issues
 - interaction with Cushing Ave
 - properties flooded

Sawpit Gully (Spring Gully)
 - interaction with Creswick Creek
 - properties flooded

Albert Street
 - capacity of creek
 - urban drainage issues
 - Bowling club flooded
 - properties flooded

Note: not all issues are represented on the map



Roads	Sub-Arterial	4wd	Stream	Wetlands
Freeway	Collector	Proposed	Channel - Drain	
Highway	Local	Bicycle Track	Connector	
Arterial	2wd	Walking Track	Channel	
		Watercourse	Drain	
		River	Structure	

Creswick Flood Mitigation & Urban Drainage Plan Summary of key issues from community meetings



The State of Victoria does not warrant the accuracy or completeness of information in this report. The State of Victoria will be no responsible liability in liability in relation to any error, omission or inaccuracy in the information.