

## Community Nominations Guide

### How to use the North Central Catchment Management Authority website to learn about the community nominations of natural resource assets

There are two ways to find out more:

1. **[STARTING WITH A MAP](#)** PAGE 2
2. **[STARTING FROM A LIST](#)** PAGE 6

You can also learn about the process to identify the natural resource assets in our region on the web site at the following address:

[http://www.nccma.vic.gov.au/What\\_We\\_Do/Valuing\\_Your\\_Environment/index.aspx](http://www.nccma.vic.gov.au/What_We_Do/Valuing_Your_Environment/index.aspx)

A link to the electronic version of this document can be found on our website at:

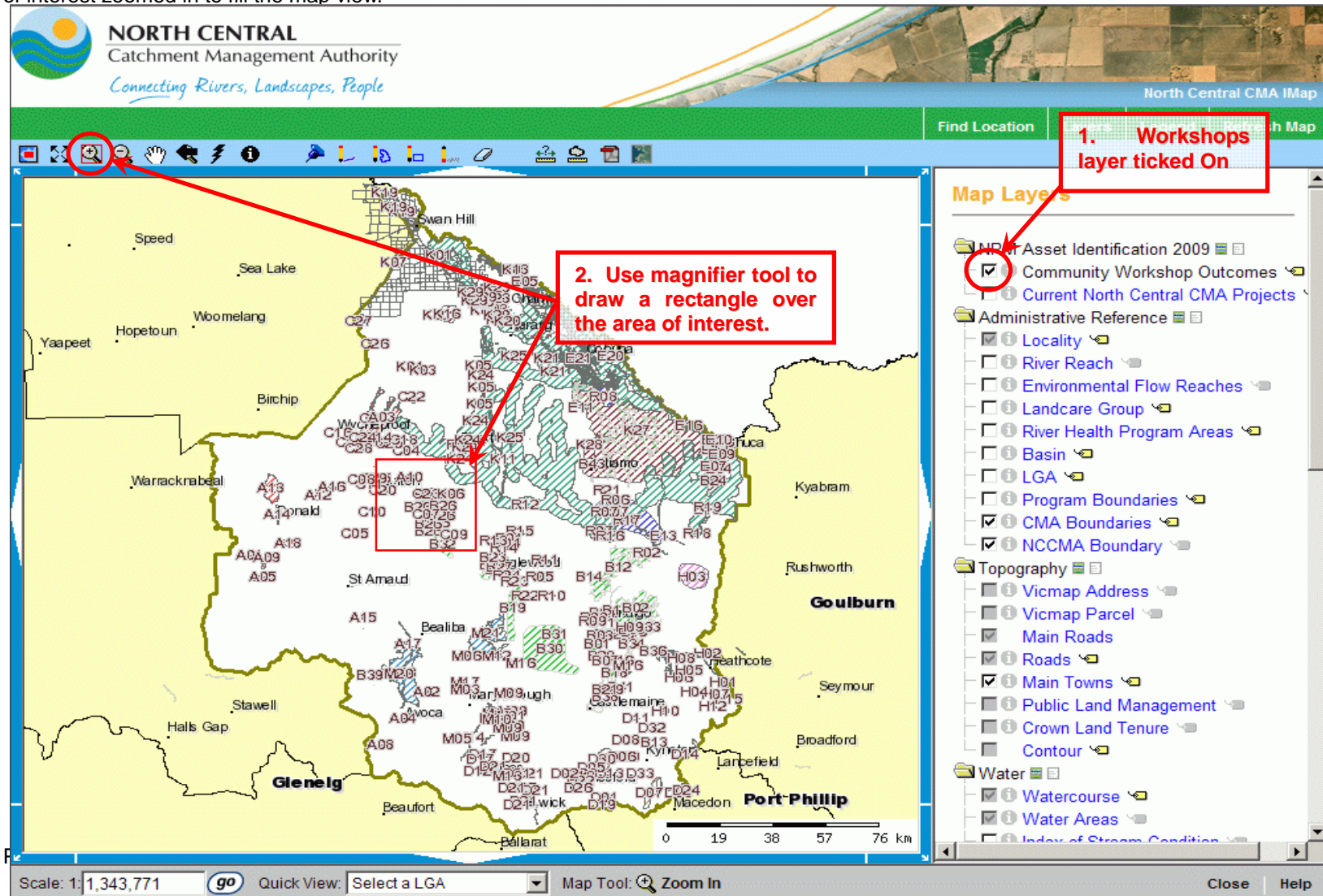
[http://www.nccma.vic.gov.au/What\\_We\\_Do/Valuing\\_Your\\_Environment/NominatedAssetInformation/index.aspx](http://www.nccma.vic.gov.au/What_We_Do/Valuing_Your_Environment/NominatedAssetInformation/index.aspx)

For further information contact the North Central Catchment Management Authority via the contact details below.

# STARTING WITH A MAP

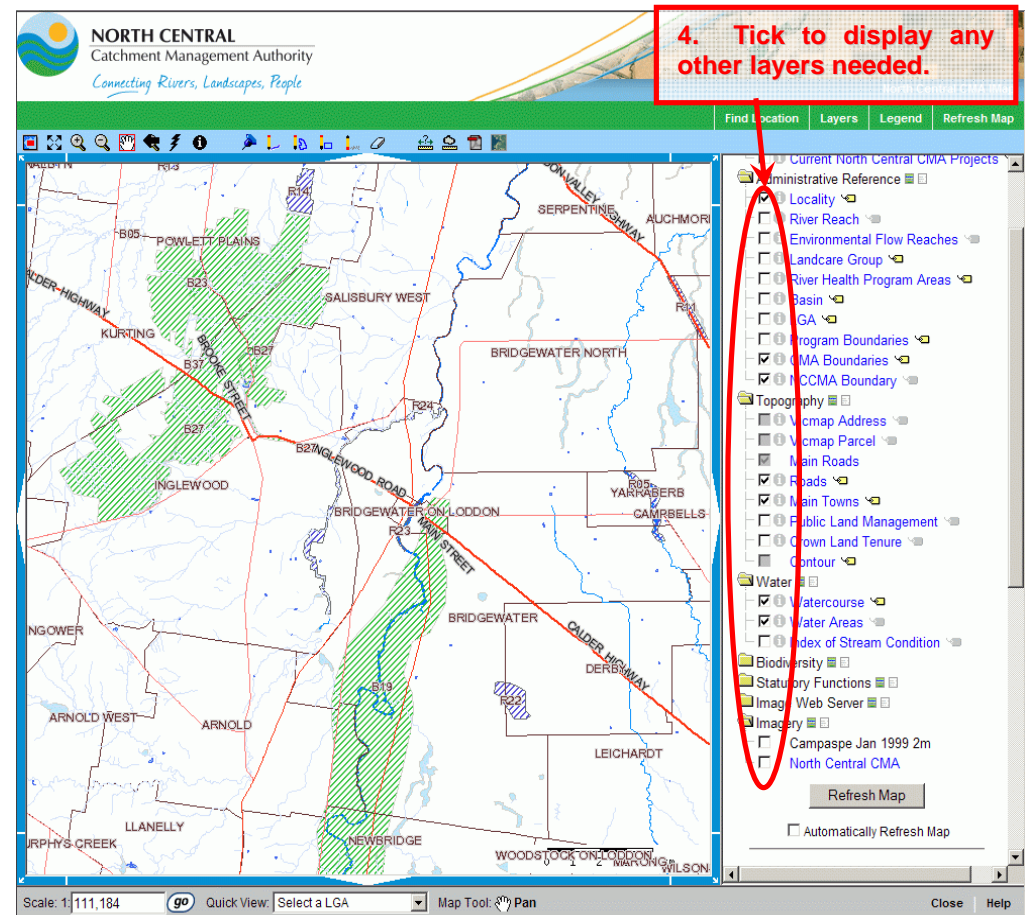
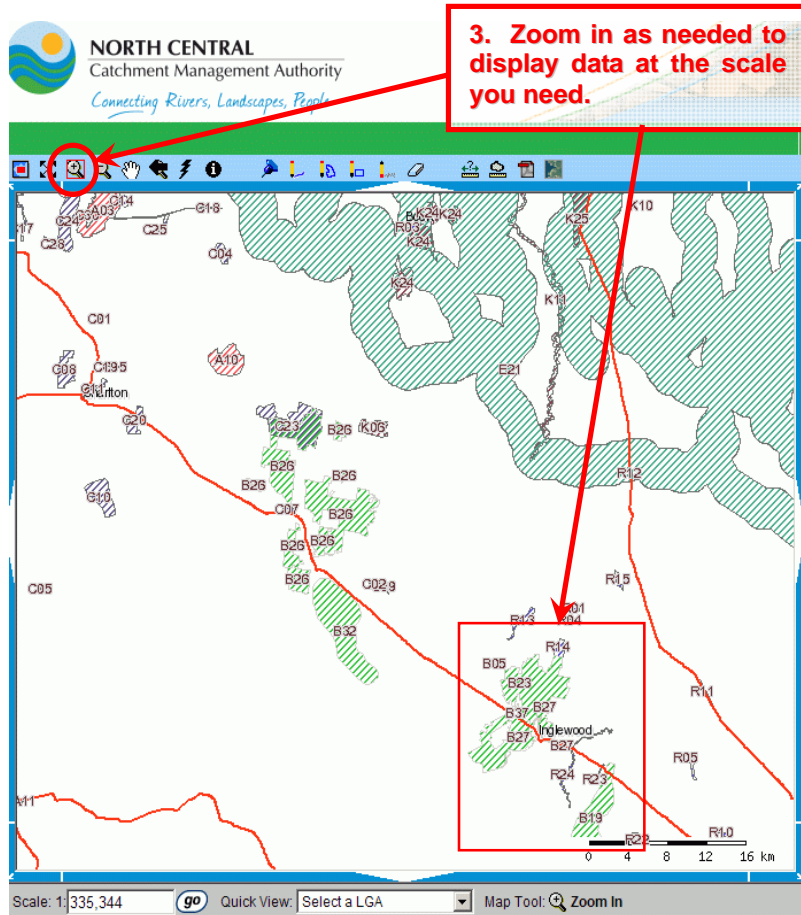
The assets identified by the community have been mapped and can be viewed on the North Central Catchment Management Authority's web site at: <http://imap.nccma.vic.gov.au:8080/nccma/imf.jsp?site=public>

1. The web page should appear as in the following screen shot, with the Community Workshop Outcomes layer ticked on in the list at the top of the right hand window. If it isn't ticked, click in the tick box to the left of the layer's name.
2. At the scale of the initial view, only the larger mapped nomination areas are visible. To zoom in, select the magnifier tool near the top left of the map and click, drag and release with your mouse to draw a red rectangle over the area you are interested in. The map will then redraw to display the area of interest zoomed in to fill the map view.



3. You may need to zoom in again

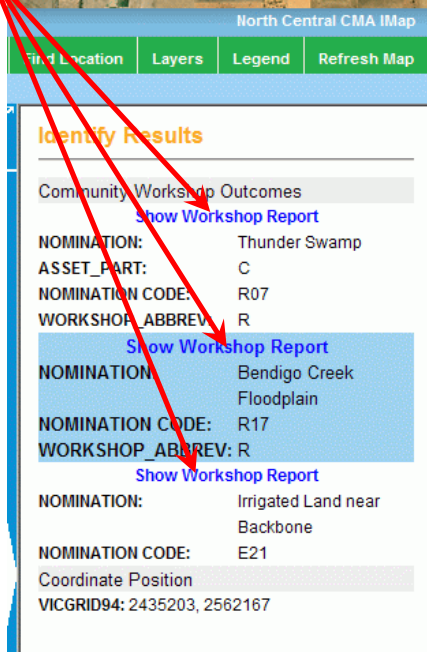
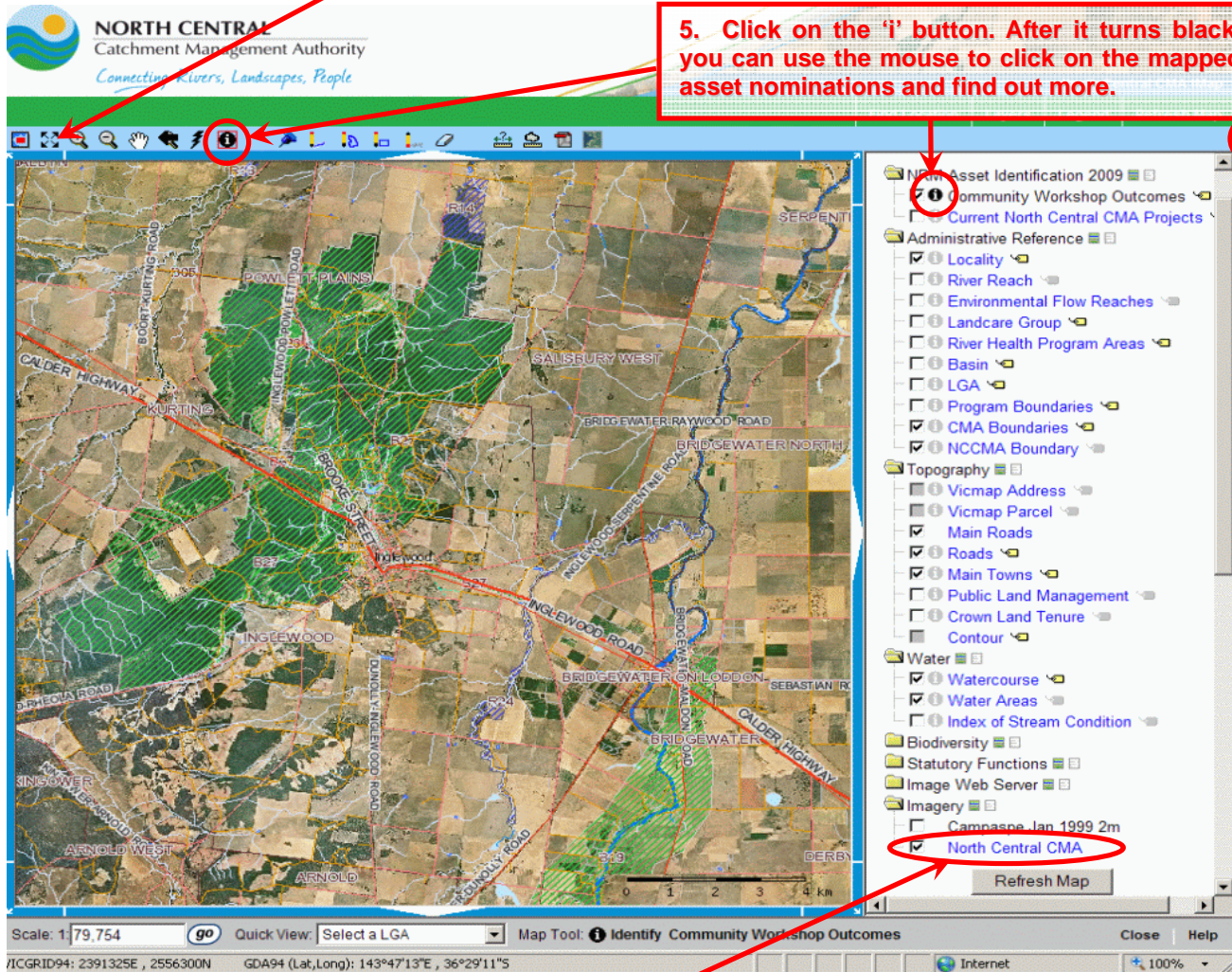
4. At larger scales, more detail is visible. If you need even more, you can tick on any of the Map Layers listed in the right hand window pane, including aerial photos. You may wish to tick on 'Automatically Refresh Map' to avoid having to click the Refresh Map button every time you change which layers are drawn on the map.



Click the Full extent button to see all the asset nominations in the region.

5. Click on the 'i' button. After it turns black, you can use the mouse to click on the mapped asset nominations and find out more.

6. A new window pane opens with links to further information about the place that you clicked.



7. Clicking on a link will take you to the web page illustrated on the next page.

Aerial photos displayed

**Click here to see a list of all nominations**

**8. Where another nomination has been made for the same place, links appear here, allowing you to look at the other nomination.**

**Also nominated at: [C03](#)**

**[Map of this nomination](#)**

**A link to the mapping of the nomination appears here.**

**NORTH CENTRAL**  
Catchment Management Authority

Home | About Us | News & Events | Getting Involved | Contact Us

Print Friendly | Text Only | Site Map | Email a Friend | Text Size

Home > What We Do > Valuing Your Environment > Nominated Asset Information

**Search**  
  
 Go  
[Advanced Search](#)

Valuing Your Environment  
**Nominated Asset Information**  
 Rivers  
 Landscapes  
 People  
 Funding  
 Our Programs and Projects  
 Our Strategies, Plans and Reports

*The information presented here has been supplied by third parties and does not necessarily reflect the views or policies of the North Central Catchment Management Authority (North Central CMA), its employees or Board members. In some cases the supplied text has been edited to improve brevity, readability or grammatical sense or to remove any potential source of liability. The North Central CMA makes no statements, representations or warranties about the accuracy or completeness of the information presented and disclaims all responsibility for any liability (including without limitation, liability in negligence) for all expenses, losses, damages and costs you may incur as a result of information being inaccurate or incomplete in any way for any reason.*

If you would like help in using this section of the website please download the following link

- [Community Nominations Guide](#)

**A10: Mount Buckrabanyule**

|                         |  |
|-------------------------|--|
| Location                | Charlton-Borong Rd, Buckrabanyule.   |
| Organisation            | Wychitella District Landcare Group   |
| Description             | Granite outcrop 317m A.S.L. lower level, grazing land approximately 800 hectares.                                |
| Current Condition       | Covered in wheel cactus which has been treated once with glyphosate herbicide. Degraded state in poor condition. |
| Community Social Values | Community value this site for its prominence and challenging landscape, e.g., Hiking.                            |
| Environmental Values    | Picturesque landscape; native vegetation; Carpet python.   |
| Economic Values         | Private ground 5 landholders grazing land.   |
| Threats                 | Wheel cactus.  |

[Map of this nomination](#)

Disclaimer | Privacy Policy | Vacancies | Incentives

This web page will appear in a new window. If you wish to return to search by the map view, either close this window or switch back to iMap (eg, use Alt+Tab on keyboard) and click the Full extent button. (See previous diagram.)

# STARTING FROM A LIST

The information about the assets identified by the community is published on the North Central Catchment Management Authority's web site at: [http://www.nccma.vic.gov.au/What\\_We\\_Do/Valuing\\_Your\\_Environment/NominatedAssetInformation/index.aspx](http://www.nccma.vic.gov.au/What_We_Do/Valuing_Your_Environment/NominatedAssetInformation/index.aspx)

All the information supplied by community nominations has been typed into a database. You can view the details by clicking the workshop asset number in the list visible on the page. If you are interested in just those from a particular workshop, you can filter the list by using the drop-down box above the list.

The screenshot shows the website interface for the North Central Catchment Management Authority. The main content area is titled "Community Meetings" and contains a disclaimer, a link to a "Community Nominations Guide", and a table of nominated assets. A search box is on the left, and a navigation menu is at the top. Two red boxes with arrows provide instructions: one points to the filter dropdown, and the other points to the asset number link in the table.

**1. To view only the nominations from a particular workshop, select a workshop from the drop down list.**

**2. To see all the details of a nomination, click its link in the left column.**

| Asset Number           | Name of Asset  |
|------------------------|--|
| No Filter              |  |
| St Arnaud 29/09/2009   | Rich Avon Weir Pool  |
| Raywood 23/09/2009     | Bradshaw Swamp   |
| Maryborough 21/20/2009 | Bunguluke Wetlands   |
| Kerang 21/09/2009      | Avoca River  |
| Heathcote 19/10/2009   | York Plain   |
| Echuca 12/10/2009      | Highly Productive soils  |
| Daylesford 26/10/2009  | Amphitheatre - Glenlogie Creek                                 |
| Charlton 4/11/2009     | Avon Plains lakes (Batyo-Catyo, Walkers, Hancock's, Holland's) |
| Bendigo 11/11/2009     | Mount Buckrabanyule  |
| <a href="#">A08</a>    | St Arnaud Lake   |
| <a href="#">A09</a>    | Mt Jeffcott and the range                                      |
| <a href="#">A10</a>    | Lake Buloke  |
| <a href="#">A11</a>    | Richardson River   |
| <a href="#">A12</a>    | Site of remnant <i>X. australis</i> (grass trees)              |
| <a href="#">A13</a>    | Wooroonook Lakes (A)   |
| <a href="#">A14</a>    | Archdale Junction reserve                                      |
| <a href="#">A15</a>    | Cope-Cope Lakes  |
| <a href="#">A16</a>    |  |
| <a href="#">A17</a>    |  |
| <a href="#">A18</a>    |  |

**Click here to go back to the list of all nominations**

**8. Where another nomination has been made for the same place, links appear here, allowing you to look at the other nomination.**

**Also nominated at: C03**

**Map of this nomination**

**A link to the mapping of the nomination appears here.**

**NORTH CENTRAL**  
Catchment Management Authority

Home | About Us | News & Events | Getting Involved | Contact Us

Search  
Advanced Search

Valuing Your Environment  
 > **Nominated Asset Information**  
 Rivers  
 Landscapes  
 People  
 Funding  
 Our Programs and Projects  
 Our Strategies, Plans and Reports

Home > What We Do > Valuing Your Environment > Nominated Asset Information

### Community Meetings

The information presented here has been supplied by third parties and does not necessarily reflect the views or policies of the North Central Catchment Management Authority (North Central CMA), its employees or Board members. In some cases the supplied text has been edited to improve brevity, readability or grammatical sense or to remove any potential source of liability. The North Central CMA makes no statements, representations or warranties about the accuracy or completeness of the information presented and disclaims all responsibility for any liability (including without limitation, liability in negligence) for all expenses, losses, damages and costs you may incur as a result of information being inaccurate or incomplete in any way for any reason.

If you would like help in using this section of the website please download the following link

- [Community Nominations Guide](#)

### A10: Mount Buckrabanyule

|                         |  |
|-------------------------|--|
| Location                | Charlton-Borong Rd, Buckrabanyule.   |
| Organisation            | Wychitella District Landcare Group   |
| Description             | Granite outcrop 317m A.S.L. lower level, grazing land approximately 800 hectares.                                |
| Current Condition       | Covered in wheel cactus which has been treated once with glyphosate herbicide. Degraded state in poor condition. |
| Community Social Values | Community value this site for its prominence and challenging landscape, e.g., Hiking.                            |
| Environmental Values    | Picturesque landscape; native vegetation; Carpet python.   |
| Economic Values         | Private ground 5 landholders grazing land.   |
| Threats                 | Wheel cactus.  |

Also nominated at: [C03](#)

[Map of this nomination](#)

Disclaimer | Privacy Policy | Vacancies | Incentives

Clicking on the link to the mapping will open the North Central CMA web mapping application in a new window. If you wish to return to search by the list, either close this window or switch back to the list view window (eg, use Alt+Tab on keyboard).