

## How do I identify an environmental asset?

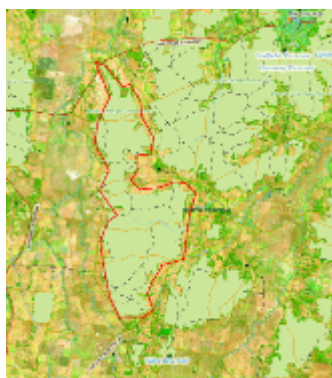
The North Central Catchment Management Authority would like to know:

1. What do you think are the most important environmental assets in your local environment?
2. Why do you value these places / things?

### What is an asset?

- An asset is the thing we hope to protect, improve or manage better through a proposed project.
- It could be large or small, degraded or pristine, localised or dispersed.
- It could be private or public land or a mix of both
- Assets can be broken down into categories such as:

Asset categories	Description of the asset
Rivers	Usually defined as individual river reaches although this is not essential
Wetlands	May include associated floodplain ecosystems
Aquifers	High value groundwater systems or aquifers
Significant species	Known point locations of threatened/significant species or mapped critical habitat for selected species
Native vegetation/habitat	This may be defined as broad habitat groups or specific ecological communities
Cultural assets	Sites of indigenous or European cultural heritage
Soils	Selected geographic areas of agricultural land or specific soil types




### Asset identification Step 1.

- Decide on what environmental asset you most value in your local environment.
- Draw a line around that environmental asset on the map supplied.
- Notice how image has the asset marked in red pen

**Note:** be as specific as possible

Asset identification recording sheet

 NORTH CENTRAL  
CMA

Name of group or person nominating the asset: .....

Name of asset		City/area only
		Asset number
		Site number
Location	Description of asset	Current condition or state of the asset
Community/social values	Environmental values	Economic values
Threats to the asset	Other discussion notes or information sources for the asset	

### Asset identification Step 2.

- Fill in the asset identification sheet supplied in your pack.
- There are instructions and example sheets included to help filling this out

### Asset identification Step 3.

- Post back to the North Central CMA

### Things to remember:

- The environmental sites that are identified through these community meetings will become part of a regional list used by North Central CMA and others to develop projects and seek funding.
- There are limited funds available to protect and improve these environmental sites so we need to think about how we can get the best results with the limited funding available.
- Projects in some areas will be funded in the near future; others may not receive immediate funding. However, by including them on a list, we may be able to leverage various funding opportunities over the coming years.
- The North Central CMA will provide feedback on those environmental sites that have been identified by the regional community as the most important. A list of these sites will be made available on the North Central CMA website in late 2009. This will include information on why they are considered important.