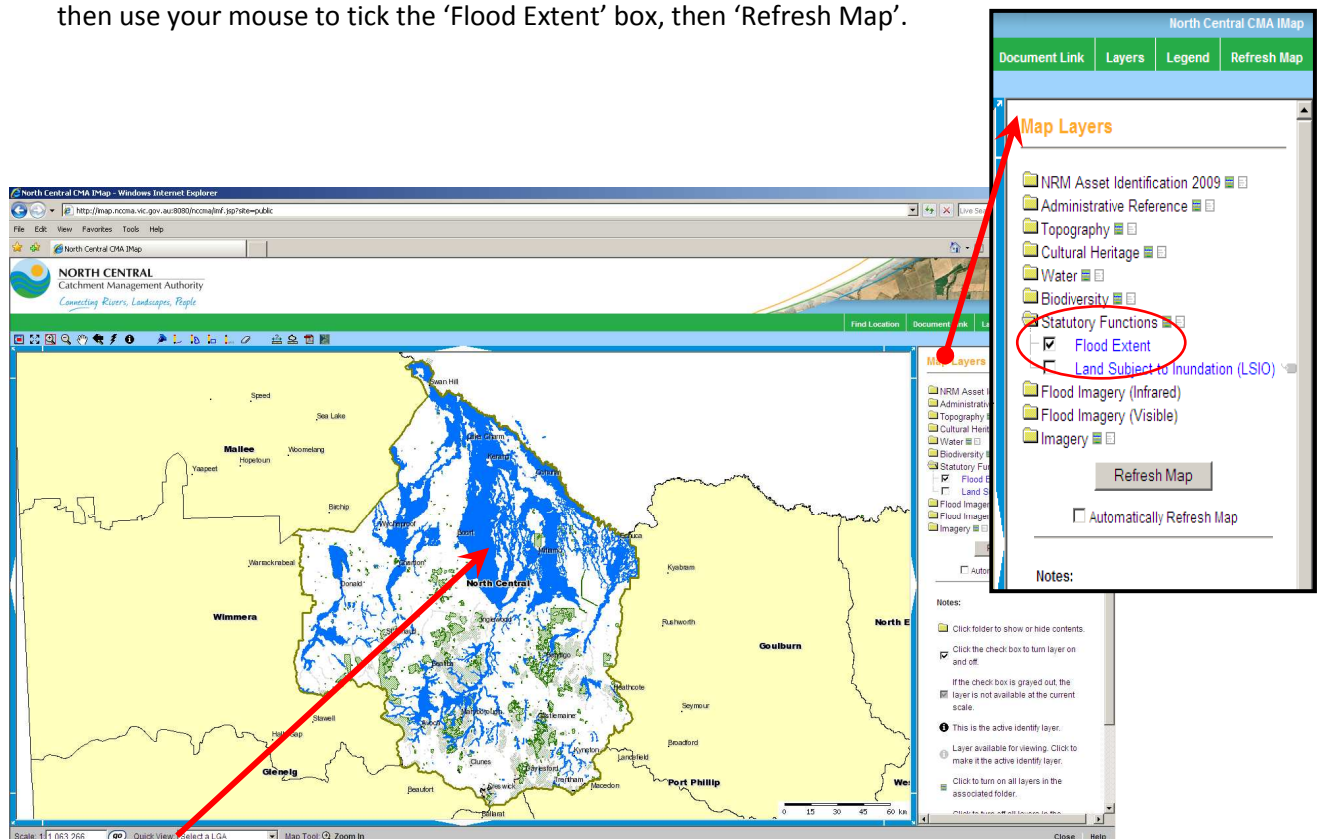


# Instructions for using iMap for Flood Plotting




**Note:** If you would like to contribute to helping the North Central CMA plot flood prone areas correctly but do not think you can follow these instructions please contact us on 03 5448 7124 and we will provide you with a printed copy of the area you wish to plot.

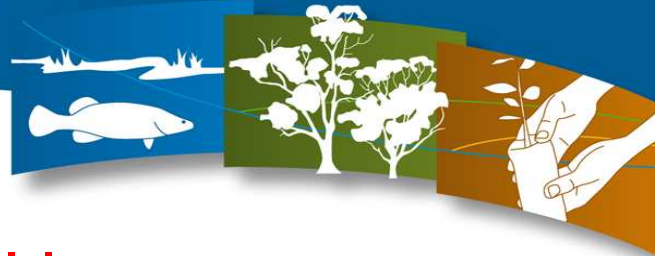
If you need assistance with mapping, contact North Central CMA Reception on 03 5448 7124 and request to speak to iMap Support.

1. Go to iMap - <http://imap.nccma.vic.gov.au:8080/nccma/imf.jsp?site=public>
2. In the right hand menu 'Map Layers' double click on the folder 'Statutory Functions', then use your mouse to tick the 'Flood Extent' box, then 'Refresh Map'.



Floods are shaded **Blue**

3. Find your location
  - Zoom to your area of interest using Zoom Tools  
  - Draw a square around your area of interest after clicking the  by clicking and holding the left mouse button, after letting go of the button the map will automatically zoom into this area.



4. Drawing your proposed flood area site

- Draw proposed site using the mark up tools
- Select the polygon mark up tool and click at each corner of your proposed flood area (move around the site in clockwise sequence clicking at each corner post).

5. Publish a map

- Click the Print PDF button and the following dialogue box (picture on the right) will appear:
- Insert map title; Please use your **Name and Location, and Flood Event as the Title.**  
e.g. Farmer Joe, Kerang, September Flood Event
- Click OK

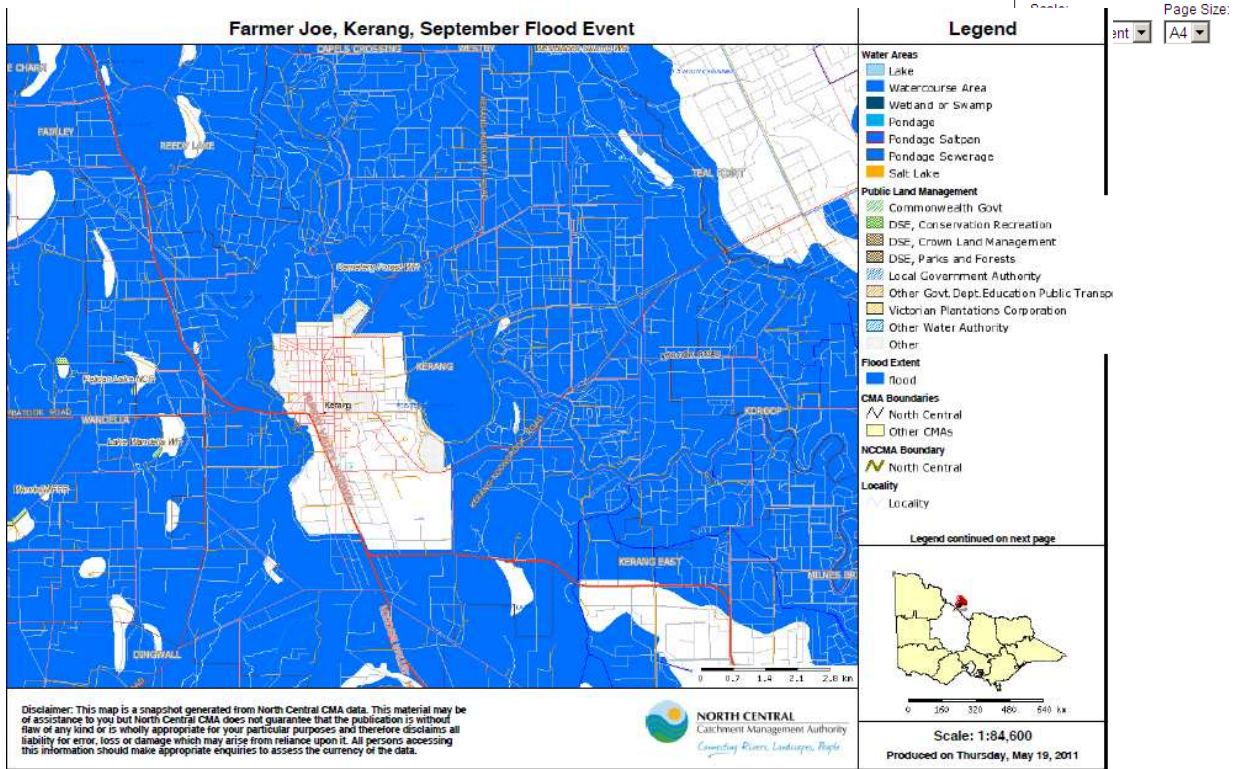
**Create a Scaled Map**

This process creates a map in a PDF document that can be saved or printed. The map will be centered at the same location as the map shown here.

*Note: It may take up to a minute to create the map document.*

Title:

Page Size:



6. Email the map

- After selecting OK the right hand menu will change to 'Create a Scaled Map'
- Left click onto 'open map'
- The following 'File Download' box will appear. Select the Save button and save your map.
- Open your email program. Select 'Create new email'
- Attach your saved map to the email.
- Enter [info@nccma.vic.gov.au](mailto:info@nccma.vic.gov.au) into the To: line.
- Send your email with your map attached.

