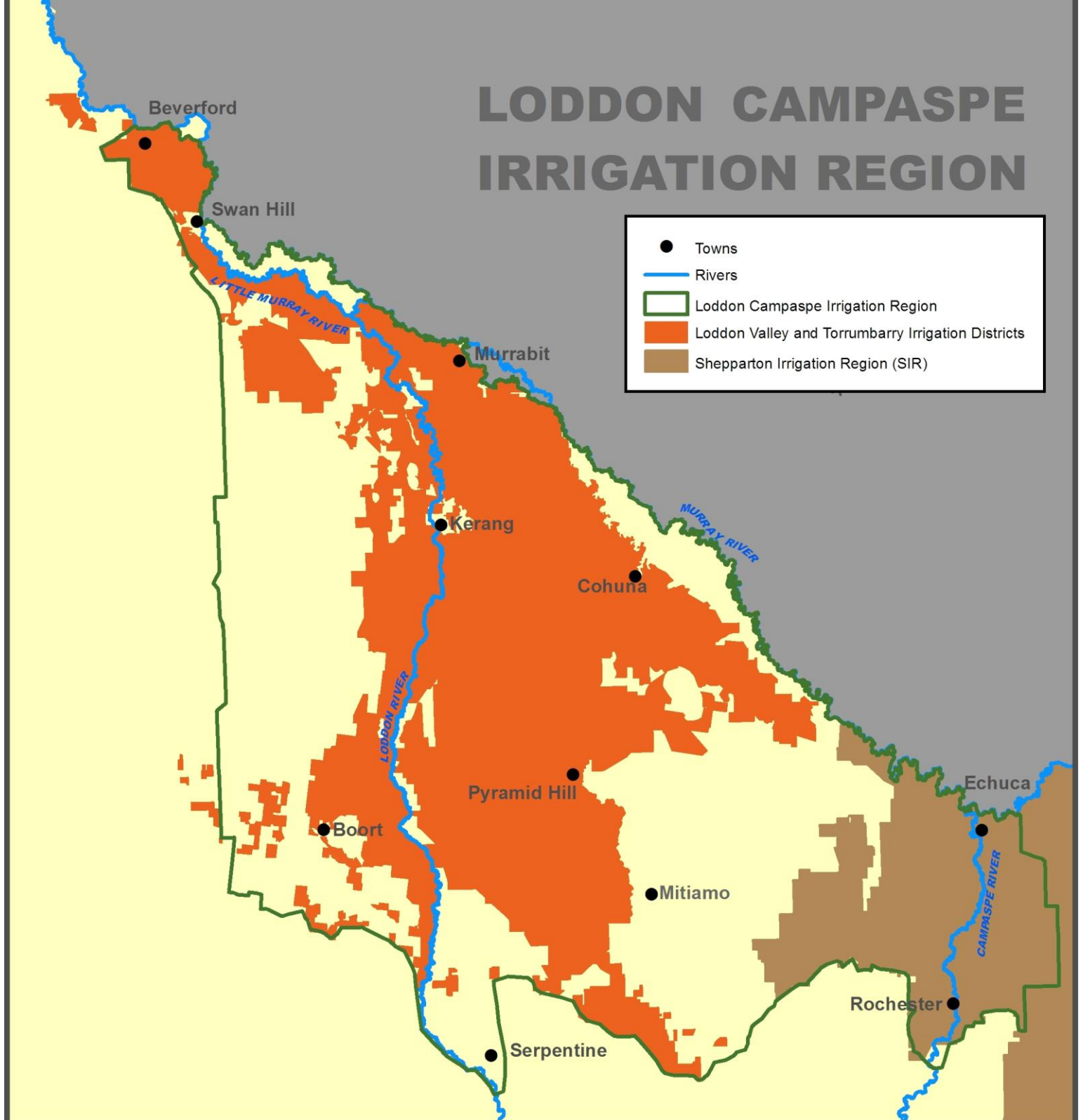


LODDON CAMPASPE IRRIGATION REGION



Cost Share Incentives

Loddon Campaspe Irrigation Region

January 2013

Natural Resource Management in Loddon Campaspe Irrigation Region

In the Loddon Campaspe Irrigation Region (LCIR) investment is delivered under the North Central Catchment Management Authority's Loddon Campaspe Irrigation Region Land and Water Management Plan. The Plan area includes the towns of Swan Hill, Kerang, Boort, Pyramid Hill, Cohuna, Leitchville, Gunbower, Echuca, Rochester, Koondrook and Lockington.

Key issues included in the Plan are the ongoing problems of salinity, increasing agricultural productivity, protecting the environment and increasing social well-being. But the Plan also identifies options to manage changes resulting from rapid water market reform. Cost-share incentives are one of the tools used to achieve its objectives.

To obtain further information on each incentive and the level of assistance you can receive, please contact the Department of Primary Industries Project Officer for your area as listed below.

- **Landowners must contact a DPI Project Officer to receive approval before commencing works.**
- **To be eligible for payment of these cost-share incentives it is essential that the landowner follow the relevant guidelines for each scheme.**
- **Incentives outlined in this brochure are always subject to the availability of funds.**
- **For the Rochester/Campaspe area, the incentives available are explained in a separate brochure 'Incentives for Catchment Works in the Shepparton Irrigation Region including the Campaspe Irrigation District'.**

Improved Land Management - Soil Salinity Survey

Project Officer: Glenn Thompson

Incentive available for: Enabling landholders to identify salinity on their properties in order to make informed management decisions.

NOTE: In some designated areas for broadacre properties these surveys are a pre-requisite for completing a Whole Farm Plan. To determine if this is a requirement for your property please contact the Project Officer for your area.

Level of assistance: Department staff will co-ordinate the survey when there is sufficient soil moisture. The landholder does not need to pay for the survey but may need to contribute by supplying steel posts for a 240 metre x 240 metre grid on the farm and by providing labour to assist with the grid and the soil salinity survey if requested.

Whole Farm Plans

Project Officers: Kathy Long, Damian Jones, Michelle Slater and Tim Robinson

Preparing a Whole Farm Plan ensures that money invested in property development is well spent, and that farm works do not interfere with regional drainage, environmental or cultural features, or floodplain water flow.

A Whole Farm Plan can be of assistance in considering backbone connection options if you are part of a G-MW Strategic Connection Program.

Incentive available for: Assist with the cost of a topographical survey and design for broadacre and irrigation farms.

Areas that require a soil salinity survey; or in modernisation areas

Level of assistance: 85 per cent of the cost. Up to a maximum rate of reimbursement;

Topographical survey \$39.50 per hectare

Design \$45.20 per hectare

Financial Assessment \$935 per property

Plan Certification \$233.80

Areas that do not require a soil salinity survey; or outside the modernisation areas

Level of assistance: 50 per cent of the cost. Up to a maximum rate of reimbursement;

Topographical survey \$23.20 per hectare

Design \$26.60 per hectare

Financial Assessment \$550 per property

Plan Certification \$137.50

Community Surface Water Management Systems

Project Officer: Rebecca Pike

Incentive available for: The survey, design and construction of a catchment scale integrated surface water management system. This will alleviate ponding and groundwater accessions by improving the management of surface water.

Level of assistance:

- 90 per cent of the cost of Survey and Design
- 50 per cent of the cost of Construction

Farm Water Program

Contact your Whole Farm Plan Project Officer

The Farm Water Program, with Australian and Victorian Government assistance aims to achieve water savings through improved farm irrigation systems. The water savings are shared between farmers and the environment, with at least half the water savings transferred to the State or Commonwealth environment water holder.

The Farm Water Program enables irrigators to implement on farm irrigation improvements to increase productivity, regional development and optimise the benefits of a modernised supply system.

- DPI is a consortium member (led by GBCMA) and has a role in working with irrigators to develop a water savings plan and complete the required application processes for Farm Water.
- Program rollout timing is governed by funding from either the Commonwealth or State Government.
- Calls for expressions of interest in the program are advertised widely in local media.
- One of the key eligibility criteria is to ensure you have an up to date Whole Farm Plan.
- Eligible farms must be connected to the modernised irrigation system.

For further information visit www.gbcma.vic.gov.au and follow the links to the Farm Water Program.

Restoring Modernised Irrigation Farms

Project Officers: Matthew Hawken, Jenny Spence, Rebecca Caldwell

Financial Assistance

- Planting or seeding indigenous trees and shrubs;
- Fencing to protect remnants and planted areas from stock and machinery.

Interested Landholders need to contact DPI through their DPI Project Officer.

Further Advice – Project Officer contact numbers;

DPI Echuca Office:

Kathy Long	54820429
Rebecca Pike	54820426
Rebecca Caldwell	54820452

DPI Kerang Office:

Mathew Hawken	54509528
Damian Jones	54509525
Tim Robinson	54509561
Michelle Slater	54509548
Jenny Spence	54509557
Glenn Thompson	54590555

North Central CMA:

Enquiries	54487124
-----------	----------

Government agencies providing natural resource management cost-share incentives

Government agencies work in partnership to deliver and support the cost-share incentives described in this brochure. Staff share knowledge and information across the agencies and work together to achieve the most positive outcome and experience for the landholder.

North Central Catchment Management Authority

The North Central CMA coordinates natural resource planning and management in the North Central Region of Victoria. It implements the North Central Regional Catchment Strategy - an asset based approach to protecting and enhancing the region's key natural resource assets - and is responsible for works on waterways, regional drainage and floodplain management.

The North Central CMA coordinates Australian and State Government investment in natural resource management. Investment in the Loddon Campaspe Irrigation Region is delivered under the Loddon Campaspe Irrigation Region Land and Water Management Plan. The North Central CMA's Natural Resources Management Committee provides strong community ownership and input to the RCS and its' supporting plans and sub-strategies.

Goulburn Broken Catchment Management Authority

The Goulburn Broken CMA coordinates natural resource planning and management for the Goulburn Broken catchment. It provides day-to-day land and water management services in the Shepparton Irrigation Region under the Shepparton Irrigation Region Catchment Strategy. It also services landholders in the Rochester/Campaspe area in the North Central CMA region.

Local Government

The Loddon Campaspe Irrigation Region includes the municipalities of Gannawarra, Campaspe and Loddon Shires and the Rural City of Swan Hill. Local government is responsible for land use planning and development approvals and is involved in the approval process for some works undertaken using cost-share incentives.

Department of Primary Industries

The Department of Primary Industries 'North Western Irrigation Services Team' provides case management, technical and extension support for implementing the cost-share incentives under the North Central Regional Catchment Strategy and the Loddon Campaspe Irrigation Region Land and Water Management Plan.

Goulburn-Murray Water

Goulburn-Murray Water (G-MW) manages the supply of water to customers in its irrigation areas. G-MW licenses surface and groundwater extractions and plays a major role in managing irrigation salinity, water quality and regional economic development. G-MW also provides technical support to the delivery of several cost-share incentives including Community Surface Water Management Systems and Whole Farm Plans.

As of July 2012 G-MW also encompasses the Northern Victorian Irrigation Renewal Program and is now delivering this as the G-MW Connections Program.

Department of Sustainability and Environment

The Department of Sustainability and Environment sets guidelines for the regional planning activities of Catchment Management Authorities and oversees government investment.



If you would like to receive this information/publication in an accessible format (such as large print or audio) please call the Customer Service Centre on: 136 186, National Relay Service/TTY 133 677, or email customer.service@dpi.vic.gov.au

Published by the Department of Primary Industries, October 2011

© The State of Victoria, 2009

This publication is copyright. No part may be reproduced by any process except in accordance with the provisions of the *Copyright Act 1968*.

Authorised by the Victorian Government, 1 Spring Street, Melbourne 3000

ISBN 978 1 74199 773 6

Disclaimer: This publication may be of assistance to you but the State of Victoria and its employees do not guarantee that the publication is without flaw of any kind or is wholly appropriate for your particular purposes and therefore disclaims all liability for any error, loss or other consequence which may arise from you relying on any information in this publication.

For more information about DPI go to www.dpi.vic.gov.au or call the Customer Call Centre on 136 186.