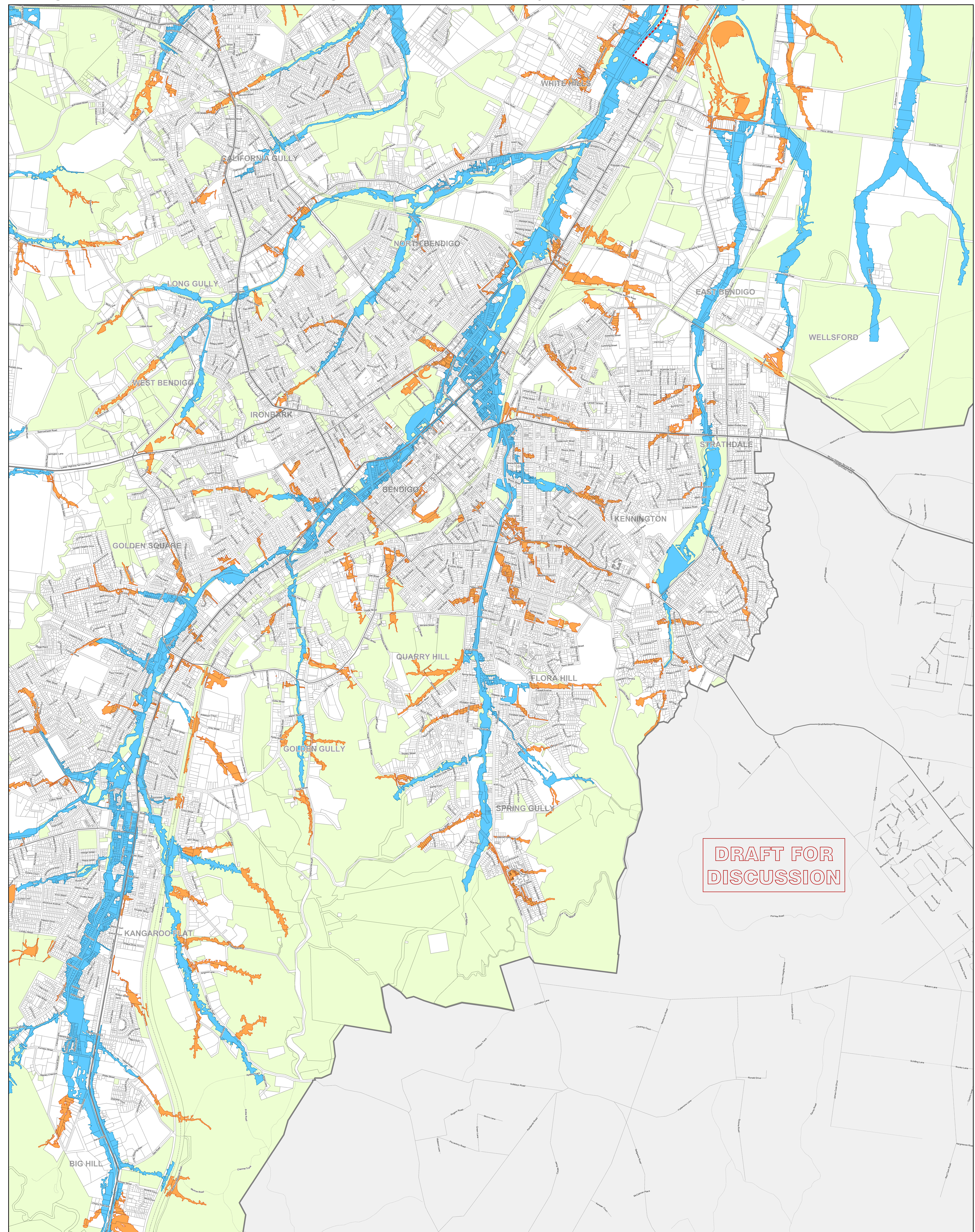




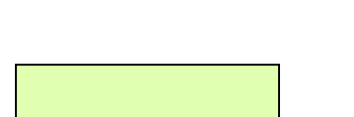



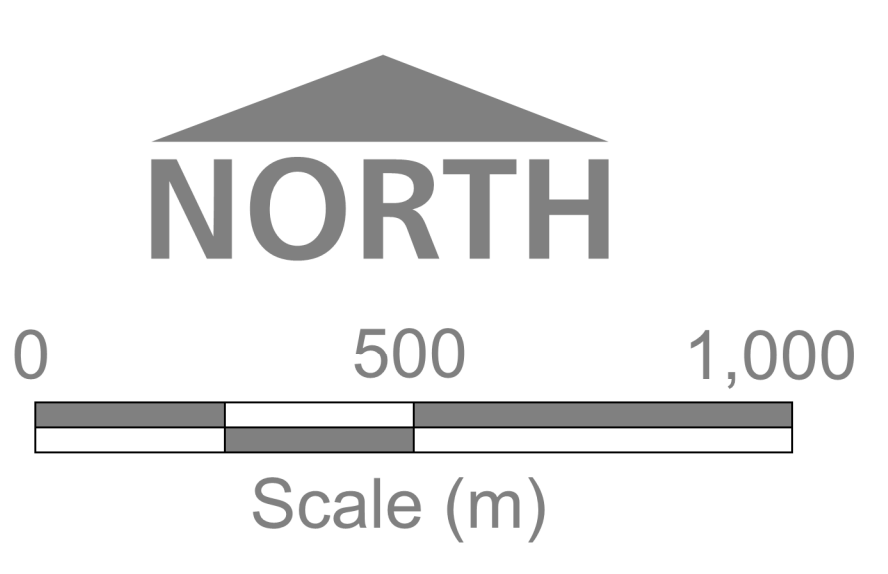


Bendigo Urban Flood Study 2013 - Kennington, Strathdale & Spr. Gully Waterway Flooding & Significant Urban Overland Flow



DRAFT FOR DISCUSSION

-  Railway
-  Roads
-  Levee Bank
-  Property Boundaries
-  Crown Land
-  Future Stage Release
- 1% AEP FLOOD EXTENTS**
-  Waterway Flooding (enquiries to NCCMA)
-  Significant Urban Overland Flow (enquiries to CoGB)



DISCLAIMER
 This map publication is presented by the North Central Catchment Management Authority. The State Government disclaims any liability (including for negligence) to any person in respect of anything and the consequences of anything, done, or not done of any kind including damages, costs, interest, loss of profits or special loss or damage, arising from any error, inaccuracy, incompleteness or other defect in this information by any such person in whole or partial reliance upon the whole or part of the information in this map publication.

Annual Exceedence Probability (AEP) is the likelihood of occurrence of a flood of a given size or larger occurring in any one year and is expressed as a percentage (%) risk. The 1% AEP flood extents shown in the above map have a 1% chance of happening in any 1 year.

Map Produced : 2 May 2014