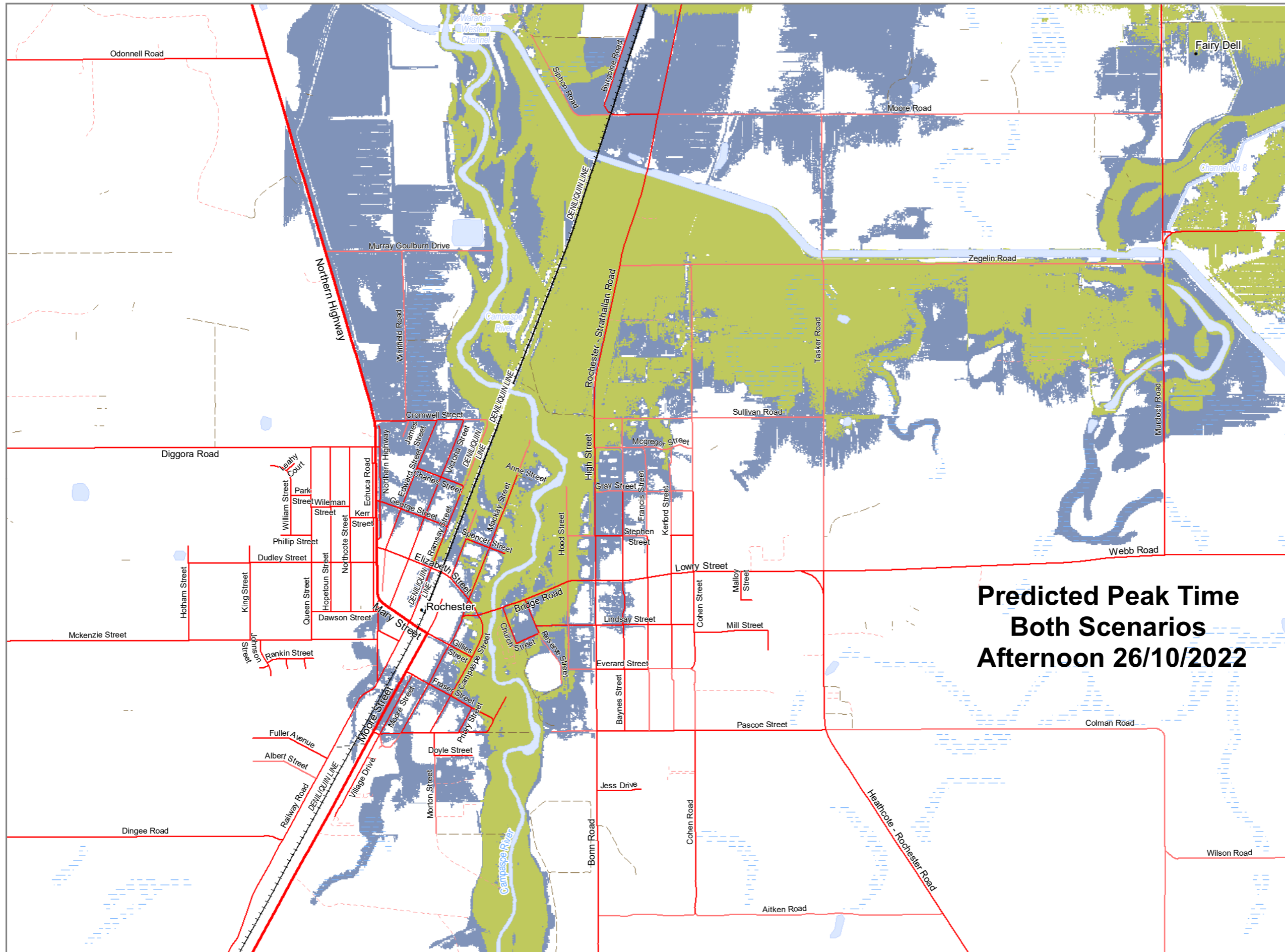


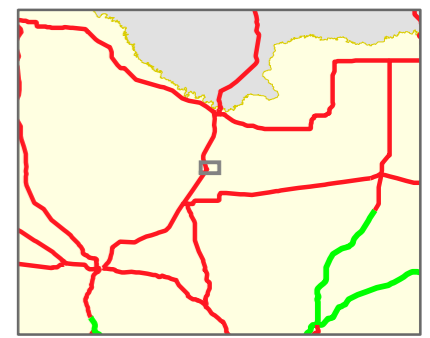
Print Date: 22/10/2022  
 Print Time: 16:27:09  
 Linescan: xxxxhr dd/mm/yyyy  
 Field Obs: 2212hr 19/11/2022  
 Sat. Hotspots: xxxxhr dd/mm/yyyy

**Legend**

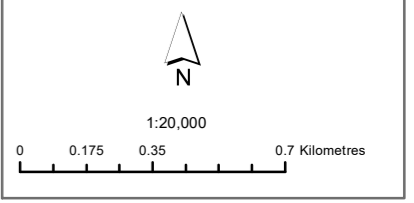
- Highways
- Arterial Sealed
- Local Sealed
- Rail Operational
- More likely scenario - 114.6m
- Higher possible scenario - 115.0m
- Perennial Waterbody



<INSERT QR CODE>



PROJECTION: Lambert Conformal Conic  
 HORIZONTAL DATUM: GDA 1994  
 COORDINATE SYSTEM: GDA 1994 VICGRID94



Disclaimer: This map is a snapshot generated from Victorian Government data. The State of Victoria does not guarantee that the publication is without flaw of any kind or is wholly appropriate for your particular purposes and therefore disclaims all liability for error, loss or damage which may arise from reliance upon it. All persons accessing this information should make appropriate enquiries to assess the currency of the data.